

For Research Use Only

POLR1A Polyclonal antibody

Catalog Number: 20595-1-AP **2 Publications**



Basic Information

Catalog Number:

20595-1-AP

Size:

500 µg/ml

Source:

Rabbit

Isotype:

IgG

Immunogen Catalog Number:

AG14543

GenBank Accession Number:

BC017115

GeneID (NCBI):

25885

UNIPROT ID:

O95602

Full Name:

polymerase (RNA) I polypeptide A,
194kDa

Calculated MW:

1720 aa, 195 kDa

Observed MW:

190-195 kDa

Purification Method:

Antigen affinity purification

Recommended Dilutions:

WB 1:500-1:2000

IP 0.5-4.0 µg for 1.0-3.0 mg of total
protein lysate

Applications

Tested Applications:

IP, WB, ELISA

Cited Applications:

IP

Species Specificity:

human

Cited Species:

human

Positive Controls:

WB : HeLa cells, HEK-293 cells, HepG2 cells

IP : HeLa cells,

Background Information

POLR1A, DNA-directed RNA polymerase I subunit RPA1, is a DNA-dependent RNA polymerase catalyzes the transcription of DNA into RNA. RNA polymerase I (Pol I) located in the nucleolus and transcribes class I genes, which code for large ribosomal RNA. Different subunits of the Pol I transcription are targets of various physiological stimuli, which suggests that multiple signaling pathways are involved in carrying out Pol I transcription. Together with the second largest subunit, it is the catalytic core component of RNA polymerase I that synthesizes ribosomal RNA precursors.

Notable Publications

Author	Pubmed ID	Journal	Application
Sijie Liu	33626331	Cell	
Chaoshen Wu	34904330	Cancer Sci	IP

Storage

Storage:

Store at -20°C. Stable for one year after shipment.

Storage Buffer:

PBS with 0.02% sodium azide and 50% glycerol pH 7.3.

Aliquoting is unnecessary for -20°C storage

For technical support and original validation data for this product please contact:

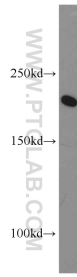
T: 4006900926

E: Proteintech-CN@ptglab.com

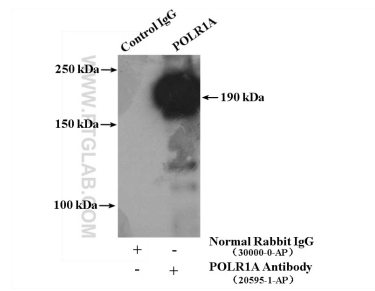
W: ptgcn.com

This product is exclusively available under Proteintech Group brand and is not available to purchase from any other manufacturer.

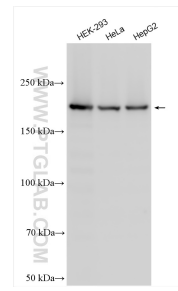
Selected Validation Data



HeLa cells were subjected to SDS PAGE followed by western blot with 20595-1-AP (POLR1A antibody) at dilution of 1:1000 incubated at room temperature for 1.5 hours.



IP result of anti-POLR1A (IP:20595-1-AP, 4ug; Detection:20595-1-AP 1:300) with HeLa cells lysate 2400ug.



Various lysates were subjected to SDS PAGE followed by western blot with 20595-1-AP (POLR1A antibody) at dilution of 1:3000 incubated at room temperature for 1.5 hours.