

For Research Use Only

ORAI2 Polyclonal antibody

Catalog Number: 20592-1-AP

8 Publications



Basic Information

Catalog Number:

20592-1-AP

Concentration:

500 ug/ml

Source:

Rabbit

Isotype:

IgG

Immunogen Catalog Number:

AG14540

GenBank Accession Number:

BC069270

GeneID (NCBI):

80228

UNIPROT ID:

Q96SN7

Full Name:

ORAI calcium release-activated calcium modulator 2

Calculated MW:

254 aa, 29 kDa

Observed MW:

36 kDa

Purification Method:

Antigen Affinity purified

Recommended Dilutions:

WB 1:500-1:1000

IHC 1:20-1:200

IF/ICC 1:50-1:500

Applications

Tested Applications:

WB, IHC, IF/ICC, ELISA

Cited Applications:

WB, IF, IP

Species Specificity:

human, mouse

Cited Species:

human, mouse, rat

Note-IHC: suggested antigen retrieval with TE buffer pH 9.0; (*) Alternatively, antigen retrieval may be performed with citrate buffer pH 6.0

Positive Controls:

WB : MCF-7 cells, mouse heart tissue

IHC : human kidney tissue,

IF/ICC : HEK-293 cells,

Background Information

ORAI2, also named as C7orf19, CBCIP2, TMEM142B and PP1729, is a Ca²⁺ release-activated Ca²⁺-like (CRAC-like) channel subunit. The MW of ORAI2 is about 36 kDa for glycosylation (PMID: 19675303).

Notable Publications

Author	Pubmed ID	Journal	Application
Fangfang Xu	34595206	Front Mol Biosci	WB
Jesse Gammons	33849280	J Am Heart Assoc	WB
Wu Lele	33850559	Exp Ther Med	WB

Storage

Storage:

Store at -20°C. Stable for one year after shipment.

Storage Buffer:

PBS with 0.02% sodium azide and 50% glycerol pH 7.3.

Aliquoting is unnecessary for -20°C storage

For technical support and original validation data for this product please contact:

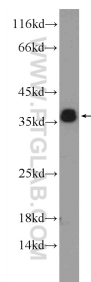
T: 4006900926

E: Proteintech-CN@ptglab.com

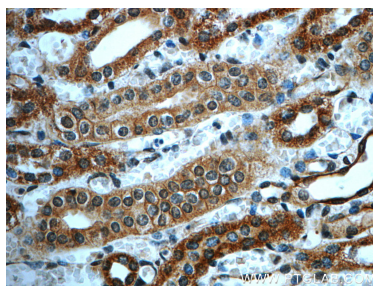
W: ptgcn.com

This product is exclusively available under Proteintech Group brand and is not available to purchase from any other manufacturer.

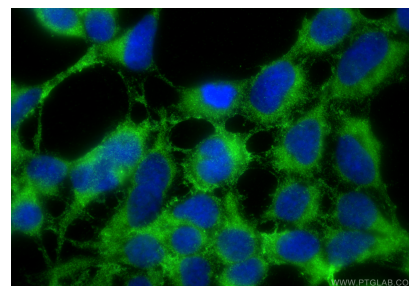
Selected Validation Data



MCF-7 cells were subjected to SDS PAGE followed by western blot with 20592-1-AP (ORAI2 Antibody) at dilution of 1:600 incubated at room temperature for 1.5 hours.



Immunohistochemical analysis of paraffin-embedded human kidney slide using 20592-1-AP (ORAI2 Antibody) at dilution of 1:50.



Immunofluorescent analysis of (-20°C Ethanol) fixed HEK-293 cells using ORAI2 antibody (20592-1-AP) at dilution of 1:200 and CoraLite®488-Conjugated Goat Anti-Rabbit IgG(H+L) (SA00013-2).