

CHD1 Polyclonal antibody

Catalog Number: 20576-1-AP

Featured Product

6 Publications

Basic Information

Catalog Number:

20576-1-AP

Size:

700 µg/ml

Source:

Rabbit

Isotype:

IgG

GenBank Accession Number:

NM_001270

GeneID (NCBI):

1105

UNIPROT ID:

O14646

Full Name:

chromodomain helicase DNA binding protein 1

Calculated MW:

197 kDa

Observed MW:

200 kDa

Purification Method:

Antigen affinity purification

Recommended Dilutions:

WB 1:300-1:1000

IP 0.5-4.0 µg for 1.0-3.0 mg of total protein lysate

Applications

Tested Applications:

IP, WB, ELISA

Cited Applications:

WB, IF

Species Specificity:

human, mouse, rat

Cited Species:

human, mouse

Positive Controls:

WB : HeLa cells, A431 cells, human brain tissue, Jurkat cells

IP : HeLa cells,

Background Information

CHD1 belongs to the SNF2/RAD54 helicase family. CHD1 is an ATP-dependent chromatin-remodeling factor which functions as substrate recognition component of the transcription regulatory histone acetylation (HAT) complex SAGA. CHD1 regulates polymerase II transcription. It is required for efficient transcription by RNA polymerase I, and more specifically the polymerase I transcription termination step. CHD1 regulates negatively DNA replication. It is required to maintain a specific chromatin configuration across the genome. It is associated with histone deacetylase (HDAC) activity. CHD1 is required for the bridging of SNF2, the FACT complex, the PAF complex as well as the U2 snRNP complex to H3K4me3. It functions to modulate the efficiency of pre-mRNA splicing in part through physical bridging of spliceosomal components to H3K4me3. It is required for maintaining open chromatin and pluripotency in embryonic stem cells. In PTEN-deficient prostate and breast cancers, CHD1 depletion profoundly and specifically suppressed cell proliferation, cell survival and tumorigenic potential. The antibody is specific to CHD1.

Notable Publications

Author	Pubmed ID	Journal	Application
Jun Zhu	31667976	Cell Prolif	WB
Peter Rüttemann	29018037	EMBO J	WB
Alexandra Wille	26635563	Front Behav Neurosci	WB

Storage

Storage:

Store at -20°C. Stable for one year after shipment.

Storage Buffer:

PBS with 0.02% sodium azide and 50% glycerol pH 7.3.

Aliquoting is unnecessary for -20°C storage

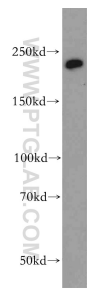
For technical support and original validation data for this product please contact:

T: 4006900926

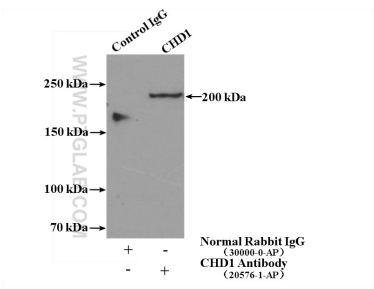
E: Proteintech-CN@ptglab.comW: ptgcn.com

This product is exclusively available under Proteintech Group brand and is not available to purchase from any other manufacturer.

Selected Validation Data



HeLa cells were subjected to SDS PAGE followed by western blot with 20576-1-AP (CHD1 antibody) at dilution of 1:500 incubated at room temperature for 1.5 hours.



IP result of anti-CHD1 (IP:20576-1-AP, 4ug; Detection:20576-1-AP 1:300) with HeLa cells lysate 1600ug.