

For Research Use Only

DOC2B Polyclonal antibody

Catalog Number: 20574-1-AP

Featured Product

6 Publications



Basic Information

Catalog Number:

20574-1-AP

Size:

500 µg/ml

Source:

Rabbit

Isotype:

IgG

GenBank Accession Number:

NM_003585

GeneID (NCBI):

8447

UNIPROT ID:

Q14184

Full Name:

double C2-like domains, beta

Calculated MW:

46 kDa

Observed MW:

46 kDa

Purification Method:

Antigen affinity purification

Recommended Dilutions:

WB 1:1000-1:4000

IF 1:10-1:100

Applications

Tested Applications:

IF/ICC, WB, ELISA

Cited Applications:

WB, IF, CoIP

Species Specificity:

human, mouse, rat

Cited Species:

human, rat, mouse

Positive Controls:

WB : HEK-293 cells, mouse brain tissue, mouse kidney tissue

IF : HepG2 cells, Hela cells

Background Information

DOC2B may be involved in constitutive membrane trafficking including dynein-dependent intracellular vesicle transport. In vitro, binds calcium and phospholipids. The antibody is specific to DOC2B.

Notable Publications

| Author | Pubmed ID | Journal | Application |
|-------------------------|-----------|-------------------|-------------|
| Samatha Bhat | 33758996 | Cell Biol Toxicol | WB |
| Shama Prasada Kabekkodu | 24570007 | J Biol Chem | WB |
| Divya Adiga | 35500882 | Pharmacol Res | WB, CoIP |

Storage

Storage:

Store at -20°C. Stable for one year after shipment.

Storage Buffer:

PBS with 0.02% sodium azide and 50% glycerol pH 7.3.

Aliquoting is unnecessary for -20°C storage

For technical support and original validation data for this product please contact:

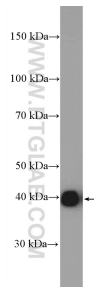
T: 4006900926

E: Proteintech-CN@ptglab.com

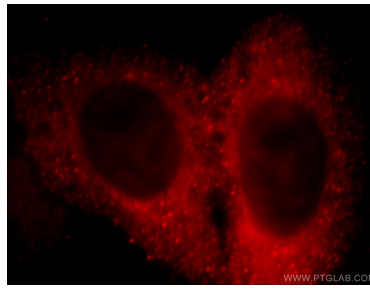
W: ptgcn.com

This product is exclusively available under Proteintech Group brand and is not available to purchase from any other manufacturer.

Selected Validation Data



HEK-293 cells were subjected to SDS PAGE followed by western blot with 20574-1-AP (DOC2B antibody) at dilution of 1:2000 incubated at room temperature for 1.5 hours.



Immunofluorescent analysis of HepG2 cells, using DOC2B antibody 20574-1-AP at 1:25 dilution and Rhodamine-labeled goat anti-rabbit IgG (red).