

STXBP1 Polyclonal antibody

Catalog Number: 20562-1-AP

Basic Information

Catalog Number: 20562-1-AP	GenBank Accession Number: NM_003165	Purification Method: Antigen affinity purification
Size: 750 µg/ml	GeneID (NCBI): 6812	Recommended Dilutions: WB 1:2000-1:10000
Source: Rabbit	UNIPROT ID: P61764	IHC 1:20-1:200
Isotype: IgG	Full Name: syntaxin binding protein 1	IF/ICC 1:50-1:500
	Calculated MW: 68 kDa	
	Observed MW: 68 kDa	

Applications

Tested Applications: IF/ICC, IHC, WB, ELISA	Positive Controls:
Species Specificity: human, mouse, rat	WB : mouse brain tissue, rat brain tissue
Note-IHC: suggested antigen retrieval with TE buffer pH 9.0; (*) Alternatively, antigen retrieval may be performed with citrate buffer pH 6.0	IHC : human brain tissue,
	IF/ICC : HeLa cells,

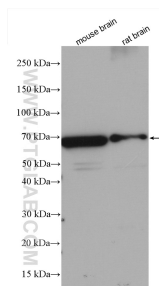
Background Information

STXBP1, also named as UNC18A, N-Sec1 and p67 belongs to the STXBP/unc-18/SEC1 family. STXBP1 may participate in the regulation of synaptic vesicle docking and fusion, possibly through interaction with GTP-binding proteins. It is essential for neurotransmission and binds syntaxin, a component of the synaptic vesicle fusion machinery probably in a 1:1 ratio. STXBP1 can interact with syntaxins 1, 2, and 3 but not syntaxin 4. It may play a role in determining the specificity of intracellular fusion reactions. The antibody is specific to STXBP1.

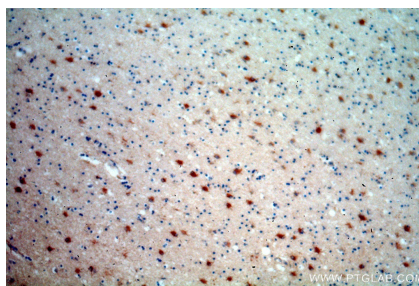
Storage

Storage:
Store at -20°C. Stable for one year after shipment.
Storage Buffer:
PBS with 0.02% sodium azide and 50% glycerol pH 7.3.
Aliquoting is unnecessary for -20°C storage

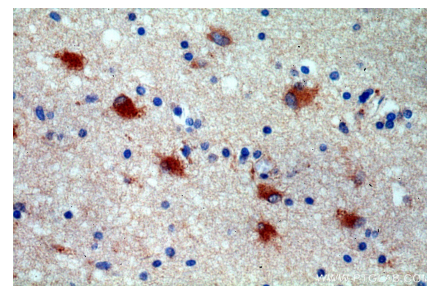
Selected Validation Data



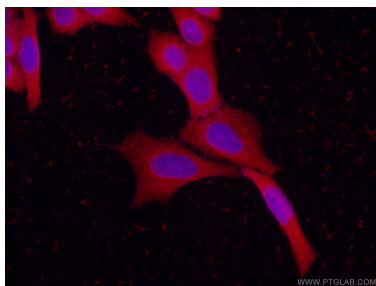
Various lysates were subjected to SDS PAGE followed by western blot with 20562-1-AP (STXBP1 antibody) at dilution of 1:5000 incubated at room temperature for 1.5 hours.



Immunohistochemical analysis of paraffin-embedded human brain using 20562-1-AP (STXBP1 antibody) at dilution of 1:100 (under 10x lens).



Immunohistochemical analysis of paraffin-embedded human brain using 20562-1-AP (STXBP1 antibody) at dilution of 1:100 (under 40x lens).



Immunofluorescent analysis of (-20°C Ethanol) fixed HeLa cells using STXBP1 antibody (20562-1-AP) at dilution of 1:50 and CoraLite594-Conjugated AffiniPure Goat Anti-Rabbit IgG(H+L).