

For Research Use Only

SLC16A12 Polyclonal antibody, PBS Only

Catalog Number: 20553-1-PBS



Basic Information

Catalog Number:

20553-1-PBS

Concentration:

1 mg/ml

Source:

Rabbit

Isotype:

IgG

GenBank Accession Number:

NM_213606

GeneID (NCBI):

387700

UNIPROT ID:

Q6ZSM3

Full Name:

solute carrier family 16, member 12
(monocarboxylic acid transporter 12)

Calculated MW:

53 kDa

Observed MW:

53-56 kDa

Purification Method:

Antigen affinity purification

Applications

Tested Applications:

WB, IHC, Indirect ELISA

Species Specificity:

human, mouse

Background Information

SLC16A12, also named as MCT12 and CJMG, belongs to the major facilitator superfamily and Monocarboxylate porter (TC 2.A.1.13) family. It is a proton-linked monocarboxylate transporter. SLC16A12 catalyzes the rapid transport across the plasma membrane of many monocarboxylates. The antibody is specific to SLC16A12.

Storage

Storage:

Store at -80°C.

The product is shipped with ice packs. Upon receipt, store it immediately at -80°C

Storage Buffer:

PBS only, pH7.3

For technical support and original validation data for this product please contact:

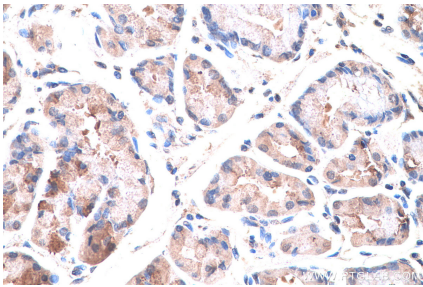
T: 4006900926

E: Proteintech-CN@ptglab.com

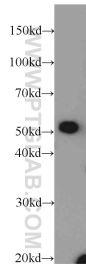
W: ptgcn.com

This product is exclusively available under Proteintech Group brand and is not available to purchase from any other manufacturer.

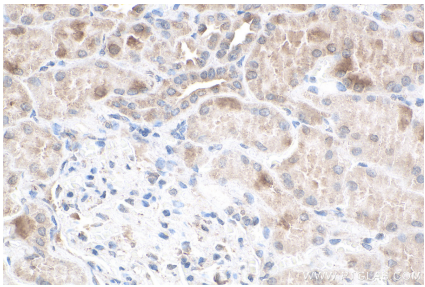
Selected Validation Data



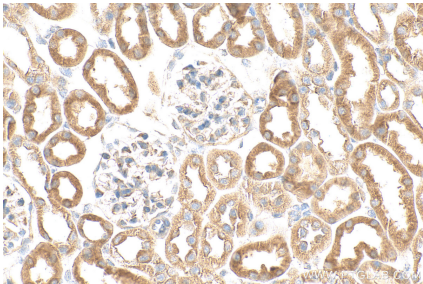
Immunohistochemical analysis of paraffin-embedded human stomach cancer tissue slide using 20553-1-AP (SLC16A12 antibody) at dilution of 1:200 (under 40x lens). Heat mediated antigen retrieval with Tris-EDTA buffer (pH 9.0). This data was developed using the same antibody clone with 20553-1-PBS in a different storage buffer formulation.



mouse kidney tissue were subjected to SDS PAGE followed by western blot with 20553-1-AP (SLC16A12 antibody) at dilution of 1:100 incubated at room temperature for 1.5 hours. This data was developed using the same antibody clone with 20553-1-PBS in a different storage buffer formulation.



Immunohistochemical analysis of paraffin-embedded human kidney tissue slide using 20553-1-AP (SLC16A12 antibody) at dilution of 1:200 (under 40x lens). Heat mediated antigen retrieval with Tris-EDTA buffer (pH 9.0). This data was developed using the same antibody clone with 20553-1-PBS in a different storage buffer formulation.



Immunohistochemical analysis of paraffin-embedded mouse kidney tissue slide using 20553-1-AP (SLC16A12 antibody) at dilution of 1:200 (under 40x lens). Heat mediated antigen retrieval with Tris-EDTA buffer (pH 9.0). This data was developed using the same antibody clone with 20553-1-PBS in a different storage buffer formulation.