

For Research Use Only

# SLC16A12 Polyclonal antibody

Catalog Number: 20553-1-AP

2 Publications



## Basic Information

Catalog Number:

20553-1-AP

Concentration:

600 ug/ml

Source:

Rabbit

Isotype:

IgG

GenBank Accession Number:

NM\_213606

GeneID (NCBI):

387700

UNIPROT ID:

Q6ZSM3

Full Name:

solute carrier family 16, member 12  
(monocarboxylic acid transporter 12)

Calculated MW:

53 kDa

Observed MW:

53-56 kDa

Purification Method:

Antigen affinity purification

Recommended Dilutions:

WB 1:500-1:1000

IHC 1:50-1:500

## Applications

Tested Applications:

WB, IHC, ELISA

Cited Applications:

WB, IHC

Species Specificity:

human, mouse

Cited Species:

human, xenopus

**Note-IHC: suggested antigen retrieval with  
TE buffer pH 9.0; (\*) Alternatively, antigen  
retrieval may be performed with citrate  
buffer pH 6.0**

Positive Controls:

WB : mouse kidney tissue,

IHC : human stomach cancer tissue, human kidney  
tissue, human testis tissue, mouse kidney tissue

## Background Information

SLC16A12, also named as MCT12 and CJMG, belongs to the major facilitator superfamily and Monocarboxylate porter (TC 2.A.1.13) family. It is a proton-linked monocarboxylate transporter. SLC16A12 catalyzes the rapid transport across the plasma membrane of many monocarboxylates. The antibody is specific to SLC16A12.

## Notable Publications

Author	Pubmed ID	Journal	Application
Yuya Futagi	31784090	Biochem Biophys Res Commun	WB
Jie Mei	31348313	Medicine (Baltimore)	IHC

## Storage

Storage:

Store at -20°C. Stable for one year after shipment.

Storage Buffer:

PBS with 0.02% sodium azide and 50% glycerol pH 7.3.

Aliquoting is unnecessary for -20°C storage

For technical support and original validation data for this product please contact:

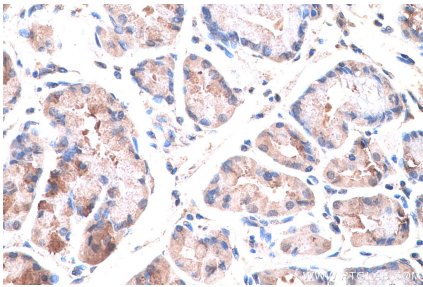
T: 4006900926

E: [Proteintech-CN@ptglab.com](mailto:Proteintech-CN@ptglab.com)

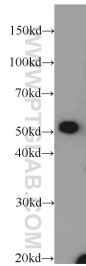
W: [ptgcn.com](http://ptgcn.com)

This product is exclusively available under Proteintech Group brand and is not available to purchase from any other manufacturer.

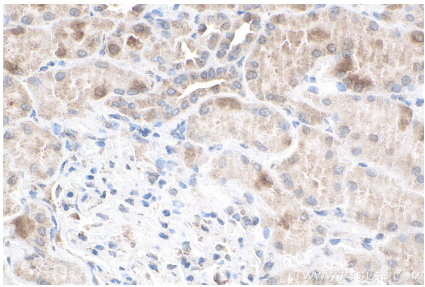
Selected Validation Data



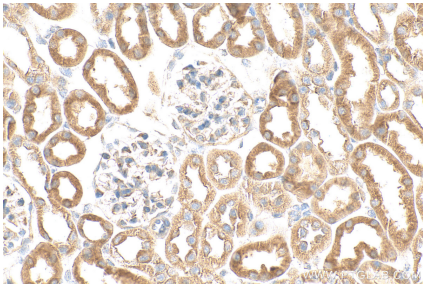
Immunohistochemical analysis of paraffin-embedded human stomach cancer tissue slide using 20553-1-AP (SLC16A12 antibody) at dilution of 1:200 (under 40x lens). Heat mediated antigen retrieval with Tris-EDTA buffer (pH 9.0).



mouse kidney tissue were subjected to SDS PAGE followed by western blot with 20553-1-AP (SLC16A12 antibody) at dilution of 1:100 incubated at room temperature for 1.5 hours.



Immunohistochemical analysis of paraffin-embedded human kidney tissue slide using 20553-1-AP (SLC16A12 antibody) at dilution of 1:200 (under 40x lens). Heat mediated antigen retrieval with Tris-EDTA buffer (pH 9.0).



Immunohistochemical analysis of paraffin-embedded mouse kidney tissue slide using 20553-1-AP (SLC16A12 antibody) at dilution of 1:200 (under 40x lens). Heat mediated antigen retrieval with Tris-EDTA buffer (pH 9.0).