

For Research Use Only

TOP2B Polyclonal antibody

Catalog Number: 20549-1-AP

Featured Product

13 Publications



Basic Information

Catalog Number:

20549-1-AP

Size:

400 µg/ml

Source:

Rabbit

Isotype:

IgG

GenBank Accession Number:

NM_001068

GeneID (NCBI):

7155

UNIPROT ID:

Q02880

Full Name:

topoisomerase (DNA) II beta 180kDa

Calculated MW:

183 kDa

Observed MW:

183 kDa

Purification Method:

Antigen affinity purification

Recommended Dilutions:

WB 1:500-1:2000

IP 0.5-4.0 µg for 1.0-3.0 mg of total protein lysate

IHC 1:20-1:200

IF 1:400-1:1600

Applications

Tested Applications:

IF/ICC, IHC, IP, WB, ELISA

Cited Applications:

WB, IP, IF, FC, IHC, ChIP

Species Specificity:

human

Cited Species:

human, mouse

Note-IHC: suggested antigen retrieval with TE buffer pH 9.0; (*) Alternatively, antigen retrieval may be performed with citrate buffer pH 6.0

Positive Controls:

WB : HeLa cells, HepG2 cells, K-562 cells

IP : HepG2 cells,

IHC : human cervical cancer tissue,

IF : HeLa cells, HepG2 cells

Background Information

TOP2B belongs to the type II topoisomerase family. TOP2B control topological states of DNA by transient breakage and subsequent rejoining of DNA strands. TOP2B makes double-strand breaks. It is indirectly involved in vitamin D-coupled transcription regulation via its association with the WINAC complex, a chromatin-remodeling complex recruited by vitamin D receptor (VDR), which is required for the ligand-bound VDR-mediated transrepression of the CYP27B1 gene. The antibody is specific to TOP2B.

Notable Publications

Author	Pubmed ID	Journal	Application
Carlo Cattrini	33091733	Cancer Treat Res Commun	WB
Lin-Yang Sun	30297860	Sci Rep	
Shangxian Luan	34727218	Naunyn Schmiedebergs Arch Pharmacol	WB

Storage

Storage:

Store at -20°C. Stable for one year after shipment.

Storage Buffer:

PBS with 0.02% sodium azide and 50% glycerol pH 7.3.

Aliquoting is unnecessary for -20°C storage

For technical support and original validation data for this product please contact:

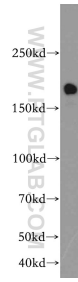
T: 4006900926

E: Proteintech-CN@ptglab.com

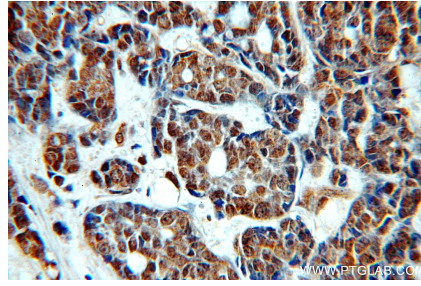
W: ptgcn.com

This product is exclusively available under Proteintech Group brand and is not available to purchase from any other manufacturer.

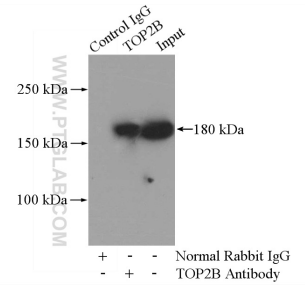
Selected Validation Data



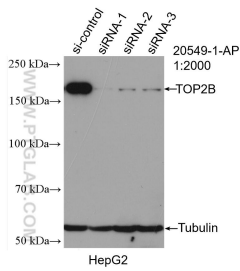
HeLa cells were subjected to SDS PAGE followed by western blot with 20549-1-AP (TOP2B antibody) at dilution of 1:300 incubated at room temperature for 1.5 hours.



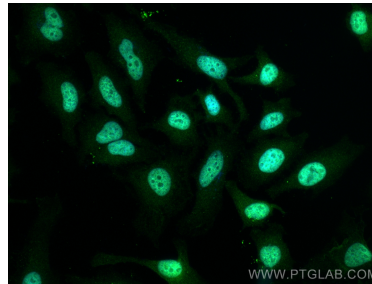
Immunohistochemical analysis of paraffin-embedded human cervical cancer using 20549-1-AP (TOP2B antibody) at dilution of 1:100 (under 40x lens).



IP result of anti-TOP2B (IP:20549-1-AP, 4ug; Detection:20549-1-AP 1:300) with HepG2 cells lysate 3200ug.



WB result of TOP2B antibody (20549-1-AP; 1:2000; incubated at room temperature for 1.5 hours) with sh-Control and sh-TOP2B transfected HepG2 cells.



Immunofluorescent analysis of (4% PFA) fixed HeLa cells using TOP2B antibody (20549-1-AP) at dilution of 1:800 and CoraLite®488-Conjugated AffiniPure Goat Anti-Rabbit IgG(H+L).