

For Research Use Only

KANK2 Polyclonal antibody

Catalog Number: 20546-1-AP

1 Publications



Basic Information

Catalog Number:

20546-1-AP

Size:

900 ug/ml

Source:

Rabbit

Isotype:

IgG

GenBank Accession Number:

NM_001136191

GeneID (NCBI):

25959

UNIPROT ID:

Q63ZY3

Full Name:

KN motif and ankyrin repeat domains

2

Calculated MW:

91 kDa

Purification Method:

Antigen affinity purification

Recommended Dilutions:

IHC 1:20-1:200

IF/ICC 1:200-1:800

Applications

Tested Applications:

IHC, IF/ICC, ELISA

Cited Applications:

IHC

Species Specificity:

human, mouse, rat

Cited Species:

human

Note-IHC: suggested antigen retrieval with TE buffer pH 9.0; (*) Alternatively, antigen retrieval may be performed with citrate buffer pH 6.0

Positive Controls:

IHC : human colon tissue, human kidney tissue, mouse heart tissue, mouse ovary tissue

IF/ICC : HeLa cells,

Background Information

KANK2, also named as ANKRD25, KIAA1518, MXRA3 and SIP, is found as a candidate tumor suppressor for renal cell carcinoma. It is an ankyrin-repeat domain-containing protein. KANK2 has an identical role in the formation of actin stress fibers. The antibody is specific to KANK2.

Notable Publications

Author	Pubmed ID	Journal	Application
Shiquan Xu	39141479	Lab Med	IHC

Storage

Storage:

Store at -20°C. Stable for one year after shipment.

Storage Buffer:

PBS with 0.02% sodium azide and 50% glycerol pH 7.3.

Aliquoting is unnecessary for -20°C storage

For technical support and original validation data for this product please contact:

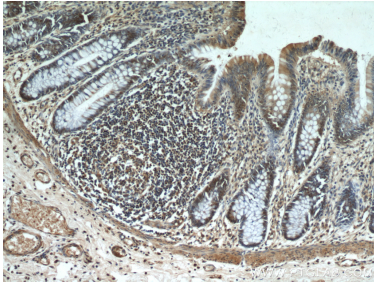
T: 4006900926

E: Proteintech-CN@ptglab.com

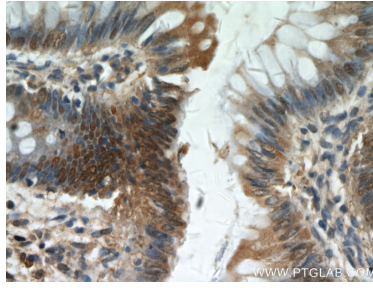
W: ptgcn.com

This product is exclusively available under Proteintech Group brand and is not available to purchase from any other manufacturer.

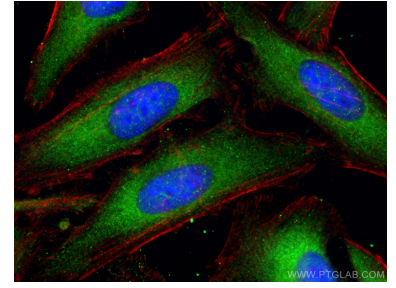
Selected Validation Data



Immunohistochemical analysis of paraffin-embedded human colon using 20546-1-AP (KANK2 antibody) at dilution of 1:100 (under 10x lens).



Immunohistochemical analysis of paraffin-embedded human colon using 20546-1-AP (KANK2 antibody) at dilution of 1:100 (under 40x lens).



Immunofluorescent analysis of (-20°C Ethanol) fixed HeLa cells using KANK2 antibody (20546-1-AP) at dilution of 1:400 and CoraLite@488-Conjugated AffiniPure Goat Anti-Rabbit IgG(H+L) (SA00013-2), CL594-phalloidin (red).