

For Research Use Only

ZNF839 Polyclonal antibody

Catalog Number: 20539-1-AP



Basic Information

Catalog Number:

20539-1-AP

Size:

550 µg/ml

Source:

Rabbit

Isotype:

IgG

Immunogen Catalog Number:

AG14573

GenBank Accession Number:

BC006222

GeneID (NCBI):

55778

UNIPROT ID:

A8K0R7

Full Name:

zinc finger protein 839

Calculated MW:

927 aa, 99 kDa

Observed MW:

87 kDa

Purification Method:

Antigen affinity purification

Recommended Dilutions:

WB 1:500-1:2000

IHC 1:20-1:200

IF/ICC 1:10-1:100

Applications

Tested Applications:

WB, IHC, IF/ICC, ELISA

Species Specificity:

human

Note-IHC: suggested antigen retrieval with TE buffer pH 9.0; (*) Alternatively, antigen retrieval may be performed with citrate buffer pH 6.0

Positive Controls:

WB : HeLa cells, human small intestine tissue

IHC : human renal cell carcinoma tissue,

IF/ICC : HepG2 cells, HeLa cells

Background Information

Storage

Storage:

Store at -20°C. Stable for one year after shipment.

Storage Buffer:

PBS with 0.02% sodium azide and 50% glycerol pH 7.3.

Aliquoting is unnecessary for -20°C storage

For technical support and original validation data for this product please contact:

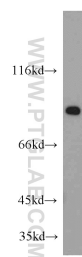
T: 4006900926

E: Proteintech-CN@ptglab.com

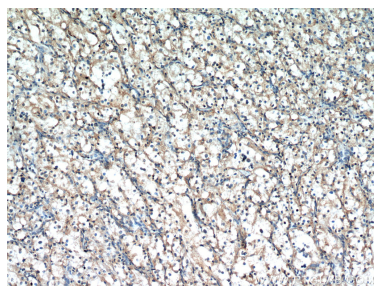
W: ptgcn.com

This product is exclusively available under Proteintech Group brand and is not available to purchase from any other manufacturer.

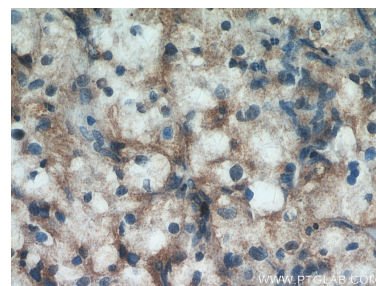
Selected Validation Data



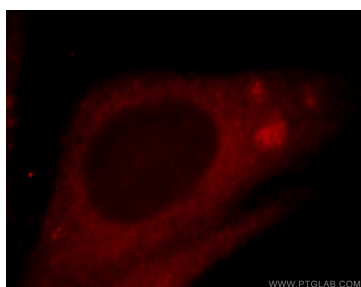
HeLa cells were subjected to SDS PAGE followed by western blot with 20539-1-AP (ZNF839 antibody) at dilution of 1:500 incubated at room temperature for 1.5 hours.



Immunohistochemical analysis of paraffin-embedded human renal cell carcinoma using 20539-1-AP (ZNF839 antibody) at dilution of 1:50 (under 10x lens).



Immunohistochemical analysis of paraffin-embedded human renal cell carcinoma using 20539-1-AP (ZNF839 antibody) at dilution of 1:50 (under 40x lens).



Immunofluorescent analysis of HepG2 cells, using ZNF839 antibody 20539-1-AP at 1:25 dilution and Rhodamine-labeled goat anti-rabbit IgG (red).