

For Research Use Only

# ZXDC Polyclonal antibody

Catalog Number: 20530-1-AP

3 Publications



## Basic Information

Catalog Number:

20530-1-AP

Size:

350 µg/ml

Source:

Rabbit

Isotype:

IgG

Immunogen Catalog Number:

AG14392

GenBank Accession Number:

BC002940

GeneID (NCBI):

79364

UNIPROT ID:

Q2QGD7

Full Name:

ZXD family zinc finger C

Calculated MW:

858 aa, 90 kDa

Observed MW:

70-75 kDa

Purification Method:

Antigen affinity purification

Recommended Dilutions:

WB 1:500-1:1000

IF/ICC 1:10-1:100

## Applications

Tested Applications:

IF/ICC, WB, ELISA

Cited Applications:

WB, IF, IHC

Species Specificity:

human, mouse

Cited Species:

human, mouse

Positive Controls:

WB : human kidney tissue, A431 cells, HEK-293 cells,  
mouse kidney tissue

IF/ICC : Hela cells,

## Background Information

### Notable Publications

Author	Pubmed ID	Journal	Application
Jiexiang Zhao	34824237	Nat Commun	IF
Mingyang Liu	38608702	Cancer Cell	WB
Yifang Mao	37599824	iScience	WB,IHC

## Storage

Storage:

Store at -20°C. Stable for one year after shipment.

Storage Buffer:

PBS with 0.02% sodium azide and 50% glycerol pH 7.3.

Aliquoting is unnecessary for -20°C storage

For technical support and original validation data for this product please contact:

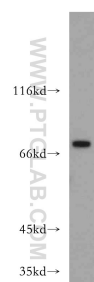
T: 4006900926

E: [Proteintech-CN@ptglab.com](mailto:Proteintech-CN@ptglab.com)

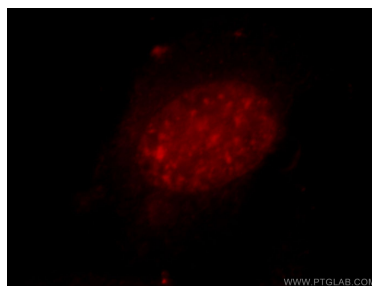
W: [ptgcn.com](http://ptgcn.com)

This product is exclusively available under Proteintech Group brand and is not available to purchase from any other manufacturer.

## Selected Validation Data



human kidney tissue were subjected to SDS PAGE followed by western blot with 20530-1-AP (ZXDC antibody) at dilution of 1:300 incubated at room temperature for 1.5 hours.



Immunofluorescent analysis of HeLa cells, using ZXDC antibody 20530-1-AP at 1:25 dilution and Rhodamine-labeled goat anti-rabbit IgG (red).