

For Research Use Only

Hikeshi Polyclonal antibody

Catalog Number: 20524-1-AP

Featured Product

4 Publications



Basic Information

Catalog Number:

20524-1-AP

Concentration:

450 ug/ml

Source:

Rabbit

Isotype:

IgG

Immunogen Catalog Number:

AG14376

GenBank Accession Number:

BC006476

GeneID (NCBI):

51501

UNIPROT ID:

Q53FT3

Full Name:

chromosome 11 open reading frame

73

Calculated MW:

197 aa, 22 kDa

Observed MW:

22 kDa

Purification Method:

Antigen affinity purification

Recommended Dilutions:

WB: 1:500-1:2000

IP: 0.5-4.0 ug for 1.0-3.0 mg of total protein lysate

IHC: 1:20-1:200

IF/ICC: 1:300-1:1200

Applications

Tested Applications:

WB, IHC, IF/ICC, IP, ELISA

Cited Applications:

WB, IHC, IF

Species Specificity:

human, mouse, rat

Cited Species:

human, mouse, rat

Positive Controls:

WB : PC-3 cells, A375 cells, mouse brain tissue

IP : mouse brain tissue,

IHC : human lung tissue,

IF/ICC : A375 cells,

Note-IHC: suggested antigen retrieval with *TE buffer pH 9.0*; (*) Alternatively, antigen retrieval may be performed with *citrate buffer pH 6.0*

Background Information

Notable Publications

Author	Pubmed ID	Journal	Application
Shingo Kose	35580988	Life Sci Alliance	WB
Kohei Hattori	33535532	Medicines (Basel)	IF
Eric J Mallack	38922739	Am J Med Genet A	WB,IF

Storage

Storage:

Store at -20°C. Stable for one year after shipment.

Storage Buffer:

PBS with 0.02% sodium azide and 50% glycerol, pH7.3

Aliquoting is unnecessary for -20°C storage

For technical support and original validation data for this product please contact:

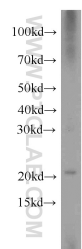
T: 4006900926

E: Proteintech-CN@ptglab.com

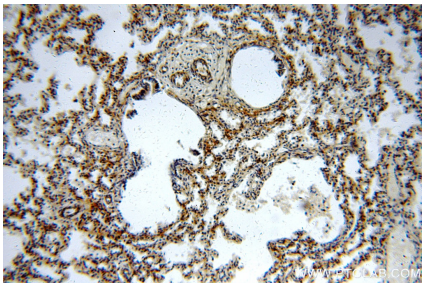
W: ptgcn.com

This product is exclusively available under Proteintech Group brand and is not available to purchase from any other manufacturer.

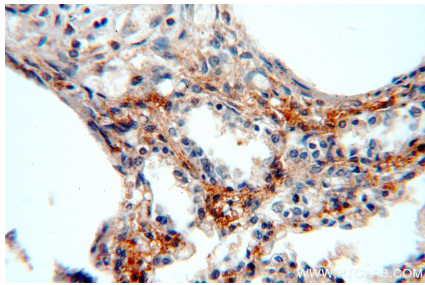
Selected Validation Data



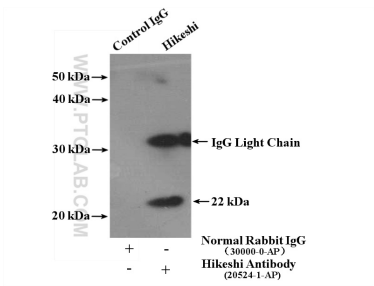
PC-3 cells were subjected to SDS PAGE followed by western blot with 20524-1-AP (Hikeshi antibody) at dilution of 1:500 incubated at room temperature for 1.5 hours.



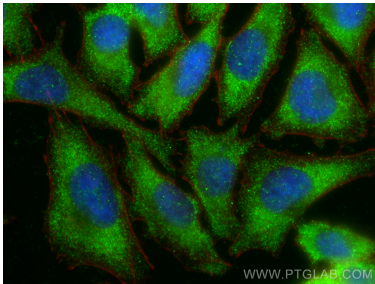
Immunohistochemical analysis of paraffin-embedded human lung using 20524-1-AP (Hikeshi antibody) at dilution of 1:100 (under 10x lens).



Immunohistochemical analysis of paraffin-embedded human lung using 20524-1-AP (Hikeshi antibody) at dilution of 1:100 (under 40x lens).



IP result of anti-Hikeshi (IP:20524-1-AP, 4ug; Detection:20524-1-AP 1:500) with mouse brain tissue lysate 3000ug.



Immunofluorescent analysis of (-20°C Ethanol) fixed A375 cells using Hikeshi antibody (20524-1-AP) at dilution of 1:600 and CoraLite®488-Conjugated Goat Anti-Rabbit IgG(H+L) (SA00013-2), CL594-Phalloidin (red).