

For Research Use Only

IL-20RB Polyclonal antibody

Catalog Number: 20521-1-AP **2 Publications**



Basic Information

Catalog Number: 20521-1-AP	GenBank Accession Number: BC033292	Purification Method: Antigen affinity purification
Size: 450 µg/ml	GeneID (NCBI): 53833	Recommended Dilutions: WB 1:500-1:2400 IF 1:10-1:100
Source: Rabbit	UNIPROT ID: Q6UXLO	
Isotype: IgG	Full Name: interleukin 20 receptor beta	
Immunogen Catalog Number: AG14368	Calculated MW: 311 aa, 35 kDa	
	Observed MW: 45 kDa, 66-70 kDa	

Applications

Tested Applications: FC, IF/ICC, WB, ELISA	Positive Controls: WB : MCF7 cells, Apoptosised HeLa cells, HeLa cells, K-562 cells IF : HepG2 cells,
Cited Applications: WB, IF, FC	
Species Specificity: human	
Cited Species: human, mouse	

Background Information

Interleukin-20 receptor subunit beta (IL20RB) is a single-pass type I membrane protein of the type II cytokine receptor family. The interleukin-20-receptor I complex (IL-20-RI) is composed of two chains, IL20RA and IL20RB. IL-20-RI is a receptor for IL-19, IL-20 and IL-24. IL20RB can also form a heterodimer with IL22RA1. The IL22RA1/IL20RB dimer is a receptor for IL20 and IL24.

Notable Publications

Author	Pubmed ID	Journal	Application
Xiao-Hui Li	38098005	J Transl Med	WB,IF
Yuge Gao	37822943	Front Immunol	FC

Storage

Storage:
Store at -20°C. Stable for one year after shipment.
Storage Buffer:
PBS with 0.02% sodium azide and 50% glycerol pH 7.3.
Aliquoting is unnecessary for -20°C storage

For technical support and original validation data for this product please contact:

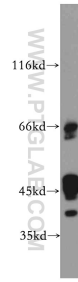
T: 4006900926

E: Proteintech-CN@ptglab.com

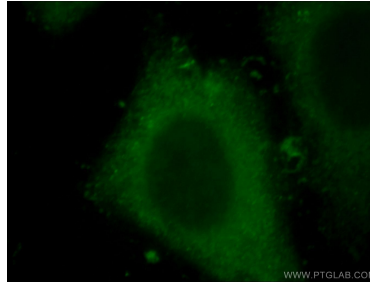
W: ptgcn.com

This product is exclusively available under Proteintech Group brand and is not available to purchase from any other manufacturer.

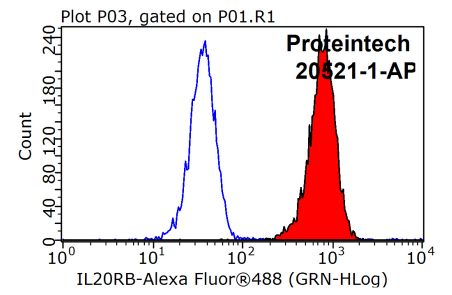
Selected Validation Data



MCF7 cells were subjected to SDS PAGE followed by western blot with 20521-1-AP (IL20RB antibody) at dilution of 1:500 incubated at room temperature for 1.5 hours.



Immunofluorescent analysis of HepG2 cells, using IL20RB antibody 20521-1-AP at 1:25 dilution and FITC- labeled goat anti-Rabbit IgG (green).



1X10⁶ K-562 cells were stained with 0.2ug IL20RB antibody (20521-1-AP, red) and control antibody (blue). Fixed with 90% MeOH blocked with 3% BSA (30 min). Alexa Fluor 488-conjugated AffiniPure Goat Anti-Rabbit IgG(H+L) with dilution 1:1000.