

# FAM164C Polyclonal antibody

Catalog Number: 20520-1-AP

## Basic Information

**Catalog Number:**

20520-1-AP

**Size:**

750 µg/ml

**Source:**

Rabbit

**Isotype:**

IgG

**Immunogen Catalog Number:**

AG14359

**GenBank Accession Number:**

BC004259

**GeneID (NCBI):**

79696

**UNIPROT ID:**

Q53FDO

**Full Name:**

family with sequence similarity 164, member C

**Calculated MW:**

275 aa, 31 kDa

**Observed MW:**

31-36 kDa

**Purification Method:**

Antigen affinity purification

**Recommended Dilutions:**

WB 1:500-1:2000

IHC 1:20-1:200

IF/ICC 1:10-1:100

## Applications

**Tested Applications:**

WB, IHC, IF/ICC, ELISA

**Species Specificity:**

human, rat

**Note-IHC: suggested antigen retrieval with TE buffer pH 9.0; (\*) Alternatively, antigen retrieval may be performed with citrate buffer pH 6.0**

**Positive Controls:**

WB : HeLa cells, C6 cells

IHC : human kidney tissue, human testis tissue

IF/ICC : C6 cells,

## Background Information

FAM164C, also named as ZC2HC1C or C14orf140, is a 456 amino acid protein, which contains one C2HC-type zinc finger and belongs to the ZC2HC1 family. FAM164C exists as two isoforms. The isoform1 is a 51kDa protein and isoform2 is 31kDa.

## Storage

**Storage:**

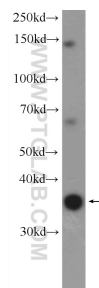
Store at -20°C. Stable for one year after shipment.

**Storage Buffer:**

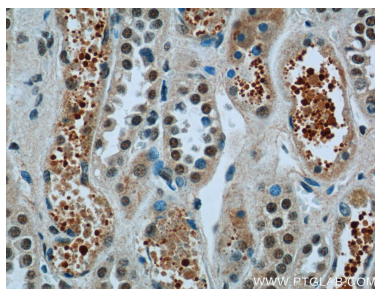
PBS with 0.02% sodium azide and 50% glycerol pH 7.3.

Aliquoting is unnecessary for -20°C storage

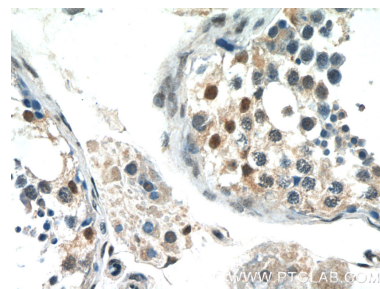
## Selected Validation Data



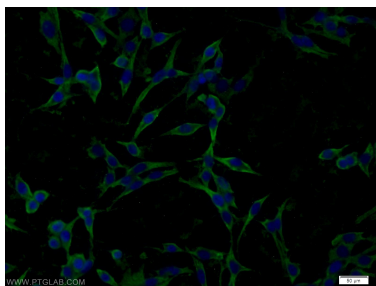
HeLa cells were subjected to SDS PAGE followed by western blot with 20520-1-AP (FAM164C Antibody) at dilution of 1:1000 incubated at room temperature for 1.5 hours.



Immunohistochemical analysis of paraffin-embedded human kidney tissue slide using 20520-1-AP (FAM164C Antibody) at dilution of 1:50 (under 40x lens).



Immunohistochemical analysis of paraffin-embedded human testis tissue slide using 20520-1-AP (FAM164C Antibody) at dilution of 1:50 (under 40x lens).



Immunofluorescent analysis of C6 cells using 20520-1-AP (FAM164C antibody) at dilution of 1:25 and Alexa Fluor 488-conjugated AffiniPure Goat Anti-Rabbit IgG(H+L).