

For Research Use Only

WIPF2 Polyclonal antibody

Catalog Number: 20512-1-AP



Basic Information

Catalog Number:

20512-1-AP

Size:

733 µg/ml

Source:

Rabbit

Isotype:

IgG

Immunogen Catalog Number:

AG14330

GenBank Accession Number:

BC065551

GeneID (NCBI):

147179

UNIPROT ID:

Q8TF74

Full Name:

WAS/WASL interacting protein family, member 2

Calculated MW:

440 aa, 46 kDa

Observed MW:

46-50 kDa

Purification Method:

Antigen affinity purification

Recommended Dilutions:

WB 1:500-1:2000

IHC 1:50-1:500

Applications

Tested Applications:

IHC, WB, ELISA

Species Specificity:

human, mouse, rat

Note-IHC: suggested antigen retrieval with TE buffer pH 9.0; (*) Alternatively, antigen retrieval may be performed with citrate buffer pH 6.0

Positive Controls:

WB: mouse brain tissue, mouse colon tissue

IHC: human breast cancer tissue, human liver cancer tissue

Background Information

Storage

Storage:

Store at -20°C. Stable for one year after shipment.

Storage Buffer:

PBS with 0.02% sodium azide and 50% glycerol pH 7.3.

Aliquoting is unnecessary for -20°C storage

For technical support and original validation data for this product please contact:

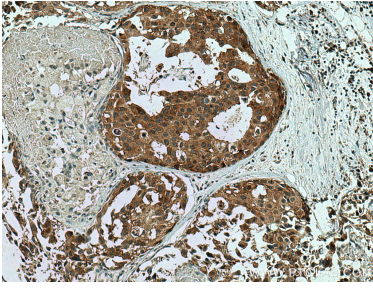
T: 4006900926

E: Proteintech-CN@ptglab.com

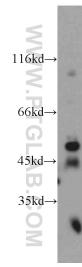
W: ptgcn.com

This product is exclusively available under Proteintech Group brand and is not available to purchase from any other manufacturer.

Selected Validation Data



Immunohistochemical analysis of paraffin-embedded human breast cancer tissue slide using 20512-1-AP (WIPF2 antibody) at dilution of 1:200 (under 10x lens). Heat mediated antigen retrieval with Tris-EDTA buffer (pH 9.0).



mouse brain tissue were subjected to SDS PAGE followed by western blot with 20512-1-AP (WIPF2 antibody) at dilution of 1:500 incubated at room temperature for 1.5 hours.