

For Research Use Only

WDR6 Polyclonal antibody

Catalog Number: 20508-1-AP



Basic Information

Catalog Number:

20508-1-AP

Size:

300 µg/ml

Source:

Rabbit

Isotype:

IgG

Immunogen Catalog Number:

AG14316

GenBank Accession Number:

BC002826

GeneID (NCBI):

11180

UNIPROT ID:

Q9NNW5

Full Name:

WD repeat domain 6

Calculated MW:

1121 aa, 122 kDa

Observed MW:

122 kDa

Purification Method:

Antigen affinity purification

Recommended Dilutions:

WB 1:500-1:1000

IF 1:10-1:100

Applications

Tested Applications:

IF/ICC, WB, ELISA

Species Specificity:

human, mouse, rat

Positive Controls:

WB : HeLa cells,

IF : HepG2 cells,

Background Information

Storage

Storage:

Store at -20°C. Stable for one year after shipment.

Storage Buffer:

PBS with 0.02% sodium azide and 50% glycerol pH 7.3.

Aliquoting is unnecessary for -20°C storage

For technical support and original validation data for this product please contact:

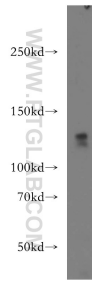
T: 4006900926

E: Proteintech-CN@ptglab.com

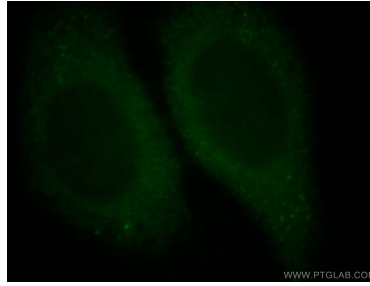
W: ptgcn.com

This product is exclusively available under Proteintech Group brand and is not available to purchase from any other manufacturer.

Selected Validation Data



HeLa cells were subjected to SDS PAGE followed by western blot with 20508-1-AP (WDR6 antibody) at dilution of 1:500 incubated at room temperature for 1.5 hours.



Immunofluorescent analysis of HepG2 cells, using WDR6 antibody 20508-1-AP at 1:25 dilution and FITC- labeled goat anti-Rabbit IgG (green).