

For Research Use Only

# ABHD6 Polyclonal antibody

Catalog Number: 20494-1-AP

Featured Product

4 Publications



## Basic Information

Catalog Number:

20494-1-AP

Concentration:

500 ug/ml

Source:

Rabbit

Isotype:

IgG

Immunogen Catalog Number:

AG13968

GenBank Accession Number:

BC001698

GeneID (NCBI):

57406

UNIPROT ID:

Q9BV23

Full Name:

abhydrolase domain containing 6

Calculated MW:

337 aa, 38 kDa

Observed MW:

35-40 kDa

Purification Method:

Antigen affinity purification

Recommended Dilutions:

WB: 1:500-1:2000

IHC: 1:50-1:500

IF/ICC: 1:200-1:800

## Applications

Tested Applications:

WB, IHC, IF/ICC, ELISA

Cited Applications:

WB

Species Specificity:

human, mouse, rat

Cited Species:

human, mouse

**Note-IHC: suggested antigen retrieval with TE buffer pH 9.0; (\*) Alternatively, antigen retrieval may be performed with citrate buffer pH 6.0**

Positive Controls:

WB : rat spleen tissue,

IHC : mouse brain tissue, human brain tissue

IF/ICC : C6 cells, RAW 264.7 cells

## Background Information

$\alpha$  /  $\beta$  -hydrolase domain 6 (ABHD6) is a lipase linked to physiological functions affecting energy metabolism. ABHD6, which was first identified in the brain ( PMID: 18096503 ), is a ubiquitously expressed lipase.

## Notable Publications

Author	Pubmed ID	Journal	Application
Jochen Schwenk	31604597	Neuron	WB
Lei Zhang	35664003	Front Immunol	WB
Xiaoyu Xiong	38197491	Mol Carcinog	WB

## Storage

Storage:

Store at -20°C. Stable for one year after shipment.

Storage Buffer:

PBS with 0.02% sodium azide and 50% glycerol, pH7.3

Aliquoting is unnecessary for -20°C storage

For technical support and original validation data for this product please contact:

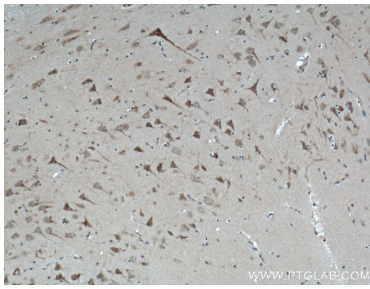
T: 4006900926

E: [Proteintech-CN@ptglab.com](mailto:Proteintech-CN@ptglab.com)

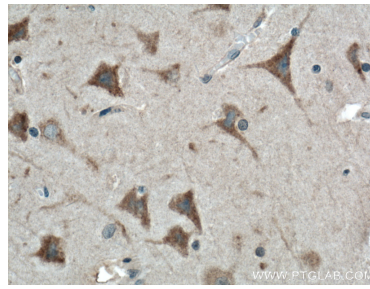
W: [ptgcn.com](http://ptgcn.com)

This product is exclusively available under Proteintech Group brand and is not available to purchase from any other manufacturer.

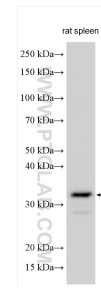
## Selected Validation Data



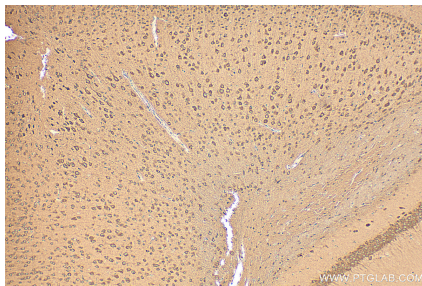
Immunohistochemical analysis of paraffin-embedded human brain tissue slide using 20494-1-AP (ABHD6 antibody) at dilution of 1:200 (under 10x lens). Heat mediated antigen retrieval with Tris-EDTA buffer (pH 9.0).



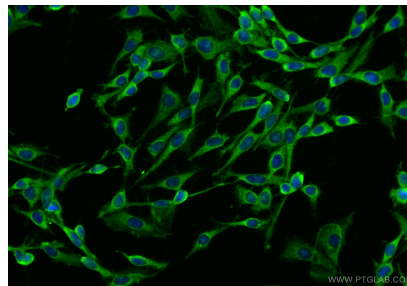
Immunohistochemical analysis of paraffin-embedded human brain tissue slide using 20494-1-AP (ABHD6 antibody) at dilution of 1:200 (under 40x lens). Heat mediated antigen retrieval with Tris-EDTA buffer (pH 9.0).



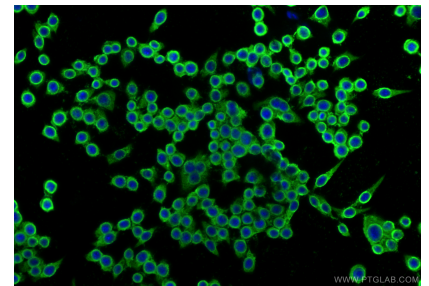
Various lysates were subjected to SDS PAGE followed by western blot with 20494-1-AP (ABHD6 antibody) at dilution of 1:1000 incubated at room temperature for 1.5 hours.



Immunohistochemical analysis of paraffin-embedded mouse brain tissue slide using 20494-1-AP (ABHD6 antibody) at dilution of 1:200 (under 10x lens). Heat mediated antigen retrieval with Tris-EDTA buffer (pH 9.0).



Immunofluorescent analysis of (-20°C Ethanol) fixed C6 cells using ABHD6 antibody (20494-1-AP) at dilution of 1:400 and CoraLite®488-Conjugated Goat Anti-Rabbit IgG(H+L) (SA00013-2).



Immunofluorescent analysis of (-20°C Ethanol) fixed RAW 264.7 cells using ABHD6 antibody (20494-1-AP) at dilution of 1:400 and CoraLite®488-Conjugated Goat Anti-Rabbit IgG(H+L) (SA00013-2).