

For Research Use Only

# NME2 Polyclonal antibody

Catalog Number: 20493-1-AP

3 Publications



## Basic Information

Catalog Number:

20493-1-AP

Concentration:

173 ug/ml

Source:

Rabbit

Isotype:

IgG

Immunogen Catalog Number:

AG13913

GenBank Accession Number:

BC002476

GeneID (NCBI):

4831

UNIPROT ID:

P22392

Full Name:

non-metastatic cells 2, protein  
(NM23B) expressed in

Calculated MW:

152 aa, 17 kDa

Observed MW:

17 kDa

Purification Method:

Antigen affinity purification

Recommended Dilutions:

WB: 1:500-1:1000

IHC: 1:50-1:500

IF/ICC: 1:50-1:500

## Applications

Tested Applications:

WB, IHC, IF/ICC, ELISA

Cited Applications:

WB

Species Specificity:

human, mouse, rat

Cited Species:

human, mouse, rat

**Note-IHC: suggested antigen retrieval with  
TE buffer pH 9.0; (\*) Alternatively, antigen  
retrieval may be performed with citrate  
buffer pH 6.0**

Positive Controls:

WB : mouse kidney tissue, Jurkat cells, mouse liver  
tissue

IHC : mouse kidney tissue,

IF/ICC : HEK-293 cells,

## Background Information

NME2(non-metastatic cells 2, protein) is also named as NDKB(Nucleoside diphosphate kinase B) and NM23B, and belongs to the NDK family. It is involved in the phosphorylation of nucleoside diphosphates, supplying nucleotide pools for DNA/RNA synthesis, and interacts with membrane receptors and constitutes a novel molecular regulatory mechanism of GPCR endocytosis. This protein has 2 isoforms produced by alternative splicing.

## Notable Publications

Author	Pubmed ID	Journal	Application
Yunqi Gu	26972251	Biochem Biophys Res Commun	WB
Yang Lu	25103794	Proteomics	WB
Ye Zhu	35427968	J Hazard Mater	WB

## Storage

Storage:

Store at -20°C. Stable for one year after shipment.

Storage Buffer:

PBS with 0.02% sodium azide and 50% glycerol, pH7.3

Aliquoting is unnecessary for -20°C storage

For technical support and original validation data for this product please contact:

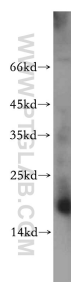
T: 4006900926

E: [Proteintech-CN@ptglab.com](mailto:Proteintech-CN@ptglab.com)

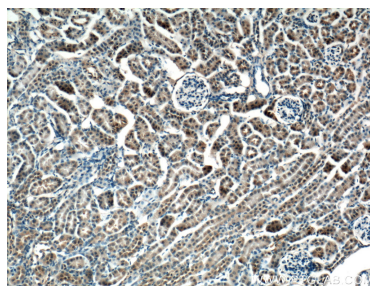
W: [ptgcn.com](http://ptgcn.com)

**This product is exclusively available under Proteintech Group brand and is not available to purchase from any other manufacturer.**

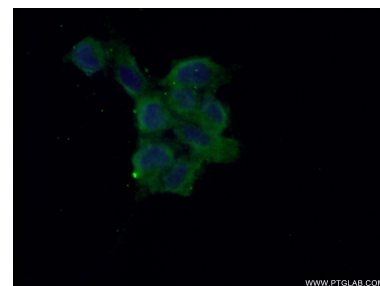
## Selected Validation Data



mouse kidney tissue were subjected to SDS PAGE followed by western blot with 20493-1-AP (NME2 antibody) at dilution of 1:200 incubated at room temperature for 1.5 hours.



Immunohistochemical analysis of paraffin-embedded mouse kidney tissue slide using 20493-1-AP (NME2 Antibody) at dilution of 1:200 (under 10x lens). Heat mediated antigen retrieval with Tris-EDTA buffer (pH 9.0).



Immunofluorescent analysis of (10% Formaldehyde) fixed HEK-293 cells using 20493-1-AP (NME2 antibody) at dilution of 1:50 and Alexa Fluor 488-conjugated AffiniPure Goat Anti-Rabbit IgG(H+L).