

For Research Use Only

# ZIP8 Polyclonal antibody, PBS Only

Catalog Number: 20459-1-PBS

Featured Product



## Basic Information

**Catalog Number:**

20459-1-PBS

**Source:**

Rabbit

**Isotype:**

IgG

**Immunogen Catalog Number:**

AG14292

**GenBank Accession Number:**

BC012125

**GeneID (NCBI):**

64116

**UNIPROT ID:**

Q9C0K1

**Full Name:**

solute carrier family 39 (zinc transporter), member 8

**Calculated MW:**

460 aa, 50 kDa

**Observed MW:**

42-46 kDa, 75-90 kDa, 150 kDa

**Purification Method:**

Antigen affinity purification

## Applications

**Tested Applications:**

WB, IHC, IP, Indirect ELISA

**Species Specificity:**

human, mouse

## Background Information

SLC39A8, also known as ZIP8, belongs to the ZIP family of metal ion transporters which function to transport zinc and/or other metal ion substrates from the extracellular space or organellar lumen into the cytoplasm. Recently it was found that ZIP8 expression is upregulated in human monocytes in response to LPS, TNF- $\alpha$ , and live bacteria, facilitating cytoprotection during the early inflammation. Besides zinc ZIP8 can also transport cadmium and manganese efficiently. It is predicted that ZIP8 contains 3 potential N-linked glycosylation sites and is subject to glycosylation, which may account for the presences of multiple molecular weights, such as 43 kDa, 49 kDa, 60 kDa, 75-90 kDa, 150 kDa, and 200 kDa.

## Storage

**Storage:**

Store at -80°C.

**The product is shipped with ice packs. Upon receipt, store it immediately at -80°C**

**Storage Buffer:**

PBS only, pH7.3

For technical support and original validation data for this product please contact:

T: 4006900926

E: [Proteintech-CN@ptglab.com](mailto:Proteintech-CN@ptglab.com)

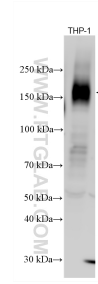
W: [ptgcn.com](http://ptgcn.com)

**This product is exclusively available under Proteintech Group brand and is not available to purchase from any other manufacturer.**

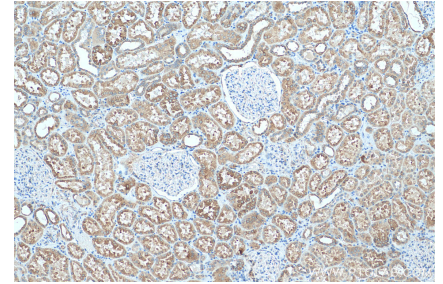
## Selected Validation Data



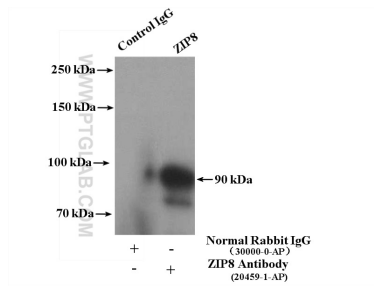
mouse lung tissue were subjected to SDS PAGE followed by western blot with 20459-1-AP (ZIP8 antibody) at dilution of 1:800 incubated at room temperature for 1.5 hours. This data was developed using the same antibody clone with 20459-1-PBS in a different storage buffer formulation.



Various lysates were subjected to SDS PAGE followed by western blot with 20459-1-AP (ZIP8 antibody) at dilution of 1:1000 incubated at room temperature for 1.5 hours. This data was developed using the same antibody clone with 20459-1-PBS in a different storage buffer formulation.



Immunohistochemical analysis of paraffin-embedded human kidney tissue slide using 20459-1-AP (ZIP8 antibody) at dilution of 1:200 (under 10x lens). Heat mediated antigen retrieval with Tris-EDTA buffer (pH 9.0). This data was developed using the same antibody clone with 20459-1-PBS in a different storage buffer formulation.



IP result of anti-ZIP8 (IP:20459-1-AP, 4ug; Detection:20459-1-AP 1:500) with mouse liver tissue lysate 6000ug. This data was developed using the same antibody clone with 20459-1-PBS in a different storage buffer formulation.