

## ALDH6A1 Polyclonal antibody

Catalog Number: 20452-1-AP

3 Publications

## Basic Information

## Catalog Number:

20452-1-AP

## Size:

400 µg/ml

## Source:

Rabbit

## Isotype:

IgG

## Immunogen Catalog Number:

AG13879

## GenBank Accession Number:

BC004909

## GeneID (NCBI):

4329

## UNIPROT ID:

Q02252

## Full Name:

aldehyde dehydrogenase 6 family,  
member A1

## Calculated MW:

535 aa, 58 kDa

## Observed MW:

58 kDa

## Purification Method:

Antigen affinity purification

## Recommended Dilutions:

WB 1:3000-1:12000

IHC 1:150-1:600

## Applications

## Tested Applications:

IHC, WB, ELISA

## Cited Applications:

WB

## Species Specificity:

human, mouse, rat

## Cited Species:

human

**Note-IHC: suggested antigen retrieval with  
TE buffer pH 9.0; (\*) Alternatively, antigen  
retrieval may be performed with citrate  
buffer pH 6.0**

## Positive Controls:

**WB**: rat liver tissue, mouse heart tissue, mouse kidney  
tissue, HEK-293 cells, rat kidney tissue, mouse liver  
tissue

**IHC**: human liver tissue, human kidney tissue, human  
hepatocirrhosis tissue

## Background Information

## Notable Publications

Author	Pubmed ID	Journal	Application
Sven Wach	31878355	Cancers (Basel)	WB
Matthias Höllerhage	35481270	Front Neurol	WB
Jianan Zhao	37649604	Theranostics	WB

## Storage

## Storage:

Store at -20°C. Stable for one year after shipment.

## Storage Buffer:

PBS with 0.02% sodium azide and 50% glycerol pH 7.3.

Aliquoting is unnecessary for -20°C storage

For technical support and original validation data for this product please contact:

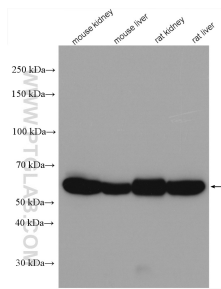
T: 4006900926

E: Proteintech-CN@ptglab.com

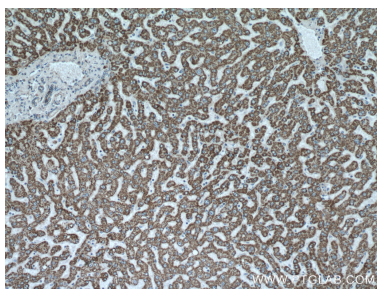
W: ptgcn.com

This product is exclusively available under Proteintech  
Group brand and is not available to purchase from any  
other manufacturer.

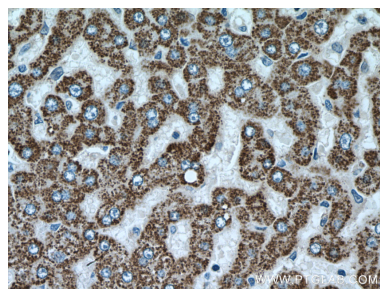
## Selected Validation Data



Various lysates were subjected to SDS PAGE followed by western blot with 20452-1-AP (ALDH6A1 antibody) at dilution of 1:6000 incubated at room temperature for 1.5 hours.



Immunohistochemical analysis of paraffin-embedded human liver tissue slide using 20452-1-AP (ALDH6A1 antibody) at dilution of 1:300 (under 10x lens).



Immunohistochemical analysis of paraffin-embedded human liver tissue slide using 20452-1-AP (ALDH6A1 antibody) at dilution of 1:300 (under 40x lens).