

For Research Use Only

C10orf58 Polyclonal antibody, PBS Only

Catalog Number: 20446-1-PBS



Basic Information

Catalog Number:

20446-1-PBS

Source:

Rabbit

Isotype:

IgG

Immunogen Catalog Number:

AG14272

GenBank Accession Number:

BC005871

GeneID (NCBI):

84293

UNIPROT ID:

Q9BRX8

Full Name:

chromosome 10 open reading frame
58

Calculated MW:

229 aa, 26 kDa

Observed MW:

24-30 kDa

Purification Method:

Antigen affinity purification

Applications

Tested Applications:

WB, IHC, IF/ICC, Indirect ELISA

Species Specificity:

human, rat

Background Information

C10orf58, also name as FAM213A and PAMM, is involved in redox regulation of the cell. It acts as an antioxidant. C10orf58 inhibits TNFSF11-induced NFKB1 and JUN activation and osteoclast differentiation. It may affect bone resorption and help to maintain bone mass. The MW of C10orf58 is 24-30 kDa.

Storage

Storage:

Store at -80°C.

The product is shipped with ice packs. Upon receipt, store it immediately at -80°C

Storage Buffer:

PBS only, pH7.3

For technical support and original validation data for this product please contact:

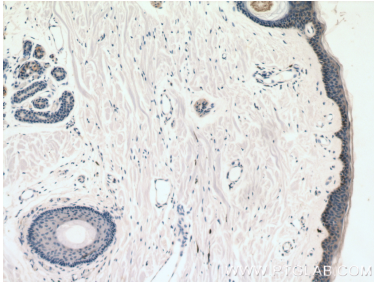
T: 4006900926

E: Proteintech-CN@ptglab.com

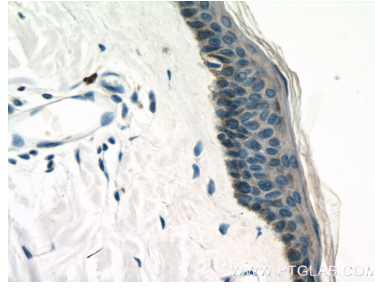
W: ptgcn.com

This product is exclusively available under Proteintech Group brand and is not available to purchase from any other manufacturer.

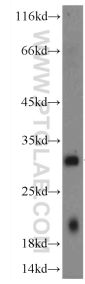
Selected Validation Data



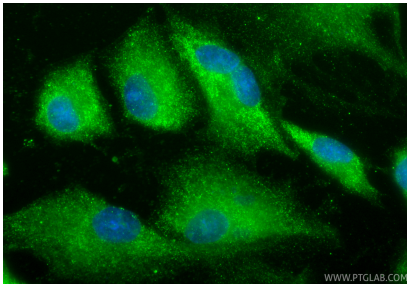
Immunohistochemical analysis of paraffin-embedded human skin tissue slide using 20446-1-AP (C10orf58 antibody) at dilution of 1:200 (under 10x lens). This data was developed using the same antibody clone with 20446-1-PBS in a different storage buffer formulation.



Immunohistochemical analysis of paraffin-embedded human skin tissue slide using 20446-1-AP (C10orf58 antibody) at dilution of 1:200 (under 40x lens). This data was developed using the same antibody clone with 20446-1-PBS in a different storage buffer formulation.



ROS1728 cells were subjected to SDS PAGE followed by western blot with 20446-1-AP (C10orf58 Antibody) at dilution of 1:300 incubated at room temperature for 1.5 hours. This data was developed using the same antibody clone with 20446-1-PBS in a different storage buffer formulation.



Immunofluorescent analysis of (-20°C Ethanol) fixed ROS1728 cells using C10orf58 antibody (20446-1-AP) at dilution of 1:200 and CoraLite®488-Conjugated Goat Anti-Rabbit IgG(H+L) (SA00013-2). This data was developed using the same antibody clone with 20446-1-PBS in a different storage buffer formulation.