

For Research Use Only

C5orf44 Polyclonal antibody

Catalog Number: 20444-1-AP



Basic Information

Catalog Number:

20444-1-AP

Size:

650 ug/ml

Source:

Rabbit

Isotype:

IgG

Immunogen Catalog Number:

AG14267

GenBank Accession Number:

BC012006

GeneID (NCBI):

80006

UNIPROT ID:

A5PLN9

Full Name:

chromosome 5 open reading frame 44

Calculated MW:

417 aa, 47 kDa

Observed MW:

47 kDa

Purification Method:

Antigen affinity purification

Recommended Dilutions:

WB 1:500-1:1000

IHC 1:20-1:200

IF/ICC 1:200-1:800

Applications

Tested Applications:

WB, IHC, IF/ICC, ELISA

Species Specificity:

human, mouse, rat

Note-IHC: suggested antigen retrieval with *TE buffer pH 9.0*; (*) Alternatively, antigen retrieval may be performed with *citrate buffer pH 6.0*

Positive Controls:

WB : HEK-293 cells, HeLa cells

IHC : human kidney tissue, human testis tissue

IF/ICC : HEK-293 cells,

Background Information

The function of C5orf44 has not been widely studied, and is yet to be fully elucidated. The MW of this protein is 47 kDa, and this antibody specially recognises the 47 kDa protein.

Storage

Storage:

Store at -20°C. Stable for one year after shipment.

Storage Buffer:

PBS with 0.02% sodium azide and 50% glycerol pH 7.3.

Aliquoting is unnecessary for -20°C storage

For technical support and original validation data for this product please contact:

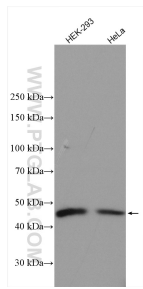
T: 4006900926

E: Proteintech-CN@ptglab.com

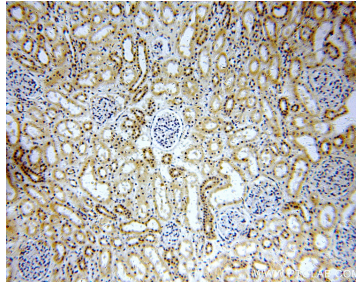
W: ptgcn.com

This product is exclusively available under Proteintech Group brand and is not available to purchase from any other manufacturer.

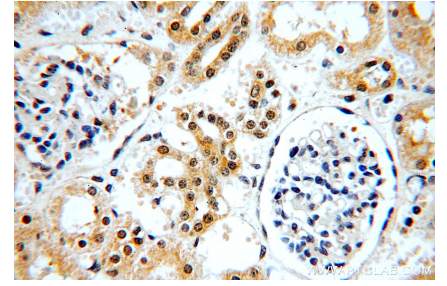
Selected Validation Data



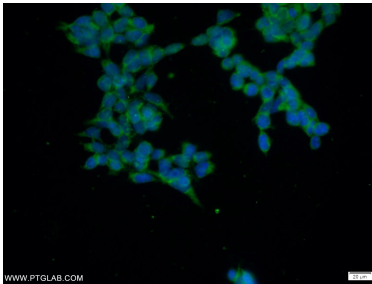
Various lysates were subjected to SDS PAGE followed by western blot with 20444-1-AP (C5orf44 antibody) at dilution of 1:800 incubated at room temperature for 1.5 hours.



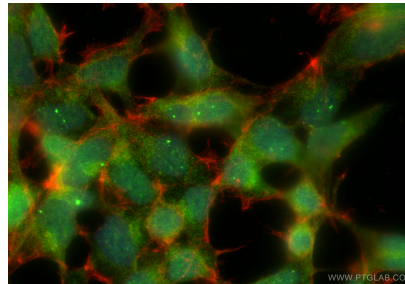
Immunohistochemical analysis of paraffin-embedded human kidney using 20444-1-AP (C5orf44 antibody) at dilution of 1:50 (under 10x lens).



Immunohistochemical analysis of paraffin-embedded human kidney using 20444-1-AP (C5orf44 antibody) at dilution of 1:50 (under 40x lens).



Immunofluorescent analysis of HEK-293 cells using 20444-1-AP (C5orf44 antibody) at dilution of 1:50 and Alexa Fluor 488-conjugated AffiniPure Goat Anti-Rabbit IgG(H+L).



Immunofluorescent analysis of (4% PFA) fixed HEK-293 cells using C5orf44 antibody (20444-1-AP) at dilution of 1:400 and CoraLite® 488-Conjugated Goat Anti-Rabbit IgG(H+L) (SA00013-2), CL594-Phalloidin (red).