

Bestrophin-3 Polyclonal antibody

Catalog Number: 20443-1-AP

2 Publications

Basic Information

Catalog Number:

20443-1-AP

Size:

600 µg/ml

Source:

Rabbit

Isotype:

IgG

Immunogen Catalog Number:

AG14255

GenBank Accession Number:

BC028087

GeneID (NCBI):

144453

UNIPROT ID:

Q8N1M1

Full Name:

bestrophin 3

Calculated MW:

668 aa, 76 kDa

Observed MW:

76-78 kDa, 50-55 kDa

Purification Method:

Antigen affinity purification

Recommended Dilutions:

WB 1:500-1:1000

IHC 1:50-1:500

Applications

Tested Applications:

IHC, WB, ELISA

Cited Applications:

WB

Species Specificity:

human, mouse

Cited Species:

mouse

Note-IHC: suggested antigen retrieval with TE buffer pH 9.0; (*) Alternatively, antigen retrieval may be performed with citrate buffer pH 6.0

Positive Controls:

WB : mouse colon tissue,

IHC : human skeletal muscle tissue,

Background Information

Bestrophin-3 (BEST3) is a member of the Bestrophin (VMD2) Ca²⁺-activated Cl channel gene family. Bestrophin-3 is involved in the regulation of cell proliferation, apoptosis and differentiation of a variety of physiological functions (PMID: 25329324). Human BEST3 gene is located at chromosome 12q15. The expression of BEST3 was predominantly observed in skeletal muscle and weaker in brain, spinal cord, bone marrow, retina, thymus, and testis (PMID: 12032738).

Notable Publications

Author	Pubmed ID	Journal	Application
Balázs Horváth	27189885	J Mol Cell Cardiol	WB
Lichang Wu	27265833	Sci Rep	WB

Storage

Storage:

Store at -20°C. Stable for one year after shipment.

Storage Buffer:

PBS with 0.02% sodium azide and 50% glycerol pH 7.3.

Aliquoting is unnecessary for -20°C storage

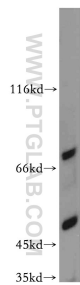
For technical support and original validation data for this product please contact:

T: 4006900926

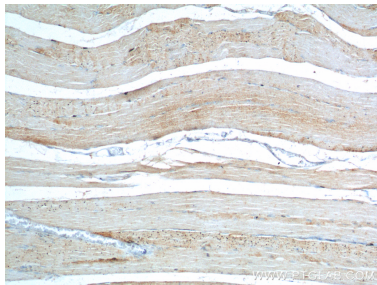
E: Proteintech-CN@ptglab.comW: ptgcn.com

This product is exclusively available under Proteintech Group brand and is not available to purchase from any other manufacturer.

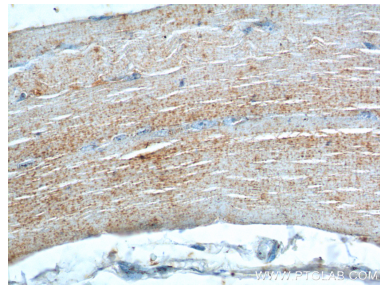
Selected Validation Data



mouse colon tissue were subjected to SDS PAGE followed by western blot with 20443-1-AP (Bestrophin-3 antibody) at dilution of 1:200 incubated at room temperature for 1.5 hours.



Immunohistochemical analysis of paraffin-embedded human skeletal muscle tissue slide using 20443-1-AP (Bestrophin-3 antibody at dilution of 1:200 (under 10x lens).



Immunohistochemical analysis of paraffin-embedded human skeletal muscle tissue slide using 20443-1-AP (Bestrophin-3 antibody at dilution of 1:200 (under 40x lens).