

For Research Use Only

# EDG2 Polyclonal antibody

Catalog Number: 20442-1-AP

3 Publications



## Basic Information

Catalog Number:

20442-1-AP

Concentration:

700 ug/ml

Source:

Rabbit

Isotype:

IgG

Immunogen Catalog Number:

AG14253

GenBank Accession Number:

BC030615

GeneID (NCBI):

1902

UNIPROT ID:

Q92633

Full Name:

lysophosphatidic acid receptor 1

Calculated MW:

364 aa, 41 kDa

Observed MW:

41-50 kDa

Purification Method:

Antigen affinity purification

Recommended Dilutions:

WB 1:300-1:1000

IHC 1:50-1:500

## Applications

Tested Applications:

WB, IHC, FC (Intra), ELISA

Cited Applications:

WB, IHC

Species Specificity:

human, mouse

Cited Species:

human, mouse

**Note-IHC: suggested antigen retrieval with TE buffer pH 9.0; (\*) Alternatively, antigen retrieval may be performed with citrate buffer pH 6.0**

Positive Controls:

**WB :** Jurkat cells, A375 cells, HeLa cells, mouse brain tissue, multi-cells/tissue, A549 cells, A2780 cells, NIH3T3 cells

**IHC :** human brain tissue, mouse brain tissue

## Background Information

EDG2 (also known as LPA1) is a G-protein coupled receptor for lysophosphatidic acid (LPA), a potent motility inducing factor, which is a major component of serum (PMID: 19415462). EDG2 is widely expressed in normal tissue during growth and development. In the context of cancer, several studies have suggested that EDG2 expression in tumors is often similar to that shown in normal tissue (PMID: 17496233).

## Notable Publications

Author	Pubmed ID	Journal	Application
Junting Cai	28348461	Mediators Inflamm	WB
Panpan Lian	39833165	Cell Death Dis	WB
Alison W Ha	39415037	Pediatr Res	WB,IHC

## Storage

Storage:

Store at -20°C. Stable for one year after shipment.

Storage Buffer:

PBS with 0.02% sodium azide and 50% glycerol pH 7.3.

Aliquoting is unnecessary for -20°C storage

For technical support and original validation data for this product please contact:

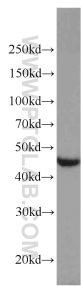
T: 4006900926

E: [Proteintech-CN@ptglab.com](mailto:Proteintech-CN@ptglab.com)

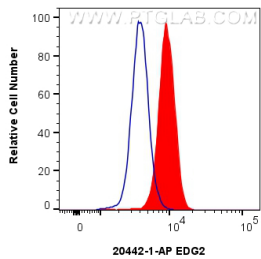
W: [ptgcn.com](http://ptgcn.com)

**This product is exclusively available under Proteintech Group brand and is not available to purchase from any other manufacturer.**

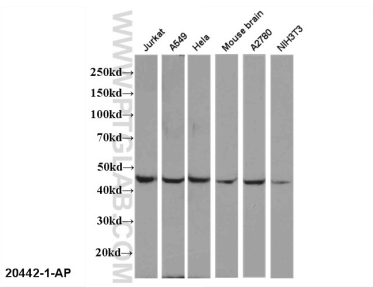
Selected Validation Data



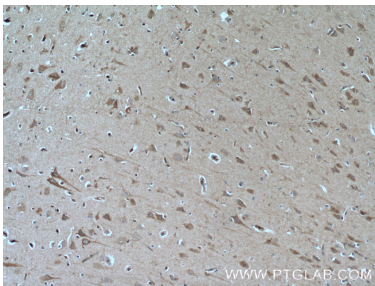
Jurkat cells were subjected to SDS PAGE followed by western blot with 20442-1-AP (EDG2 antibody) at dilution of 1:1000 incubated at room temperature for 1.5 hours.



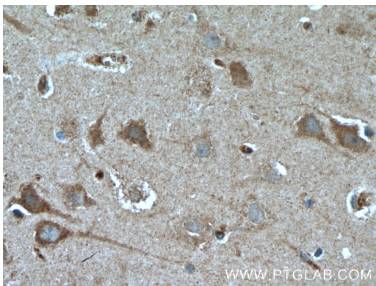
1x10<sup>6</sup> Jurkat cells were intracellularly stained with 0.25 ug EDG2 Polyclonal antibody (20442-1-AP) and CoraLite® 488-Conjugated Goat Anti-Rabbit IgG(H+L) (SA00013-2)(red), or 0.25 ug Rabbit IgG Isotype Control RecAb (98136-1-RR, Clone: 240953C9) (blue). Cells were fixed with 4% PFA and permeabilized with Flow Cytometry Perm Buffer (PF00011-C).



Multi-cells/tissue were subjected to SDS PAGE followed by western blot with 20442-1-AP (EDG2 antibody) at dilution of 1:1000 incubated at room temperature for 1.5 hours.



Immunohistochemical analysis of paraffin-embedded human brain tissue slide using 20442-1-AP (LPAR1,EDG2 Antibody) at dilution of 1:100 (under 10x lens). Heat mediated antigen retrieval with Tris-EDTA buffer (pH 9.0).



Immunohistochemical analysis of paraffin-embedded human brain tissue slide using 20442-1-AP (LPAR1,EDG2 Antibody) at dilution of 1:100 (under 40x lens). Heat mediated antigen retrieval with Tris-EDTA buffer (pH 9.0).