

For Research Use Only

YIPF2 Polyclonal antibody, PBS Only

Catalog Number: 20441-1-PBS

Featured Product



Basic Information

Catalog Number:

20441-1-PBS

Size:

1 mg/ml

Source:

Rabbit

Isotype:

IgG

Immunogen Catalog Number:

AG14238

GenBank Accession Number:

BC000056

GeneID (NCBI):

78992

UNIPROT ID:

Q9BWQ6

Full Name:

Yip1 domain family, member 2

Calculated MW:

316 aa, 35 kDa

Observed MW:

35-40 kDa

Purification Method:

Antigen affinity purification

Applications

Tested Applications:

WB, IP, Indirect ELISA

Species Specificity:

human

Background Information

YIPF2 is a member of YIP family whose name refers to the Ypt (yeast RAB GTPase)-interacting protein predicted to have five transmembrane segments with an N-terminal exposed to the cytoplasm and a short C-terminal exposed to the lumen of the secretory pathway. YIPF2 has been reported to mainly locate in the trans-Golgi network (TGN) co-localized with virous RAB proteins, suggesting that it is potentially involved in vesicle transport (PMID: 31189879). YIPF2 can serve as the GDF (GDI-displacement factor) of RAB5/RAB22A and intracellular binder of CD147 in HCC cells (PMID: 31189879).

Storage

Storage:

Store at -80°C.

The product is shipped with ice packs. Upon receipt, store it immediately at -80°C

Storage Buffer:

PBS Only

For technical support and original validation data for this product please contact:

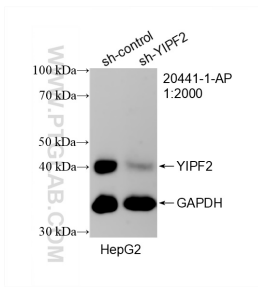
T: 4006900926

E: Proteintech-CN@ptglab.com

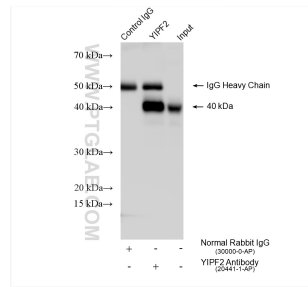
W: ptgcn.com

This product is exclusively available under Proteintech Group brand and is not available to purchase from any other manufacturer.

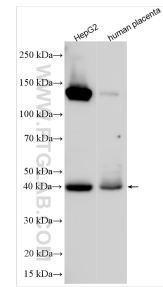
Selected Validation Data



WB result of YIPF2 antibody (20441-1-AP; 1:2000; incubated at room temperature for 1.5 hours) with sh-Control and sh-YIPF2 transfected HepG2 cells. This data was developed using the same antibody clone with 20441-1-PBS in a different storage buffer formulation.



IP result of anti-YIPF2 (IP:20441-1-AP, 4ug; Detection:20441-1-AP 1:500) with HepG2 cells lysate 1470 ug. This data was developed using the same antibody clone with 20441-1-PBS in a different storage buffer formulation.



Various lysates were subjected to SDS PAGE followed by western blot with 20441-1-AP (YIPF2 antibody) at dilution of 1:1000 incubated at room temperature for 1.5 hours. This data was developed using the same antibody clone with 20441-1-PBS in a different storage buffer formulation.