

For Research Use Only

# CLK1 Polyclonal antibody, PBS Only

Catalog Number:20439-1-PBS



## Basic Information

Catalog Number:

20439-1-PBS

Source:

Rabbit

Isotype:

IgG

Immunogen Catalog Number:

AG14214

GenBank Accession Number:

BC031549

GeneID (NCBI):

1195

UNIPROT ID:

P49759

Full Name:

CDC-like kinase 1

Calculated MW:

484 aa, 57 kDa

Observed MW:

62 kDa

Purification Method:

Antigen affinity purification

## Applications

Tested Applications:

WB, IP, Indirect ELISA

Species Specificity:

human

## Background Information

CLK1 (CDC-like kinase 1) is the dual specificity kinase acting on both serine/threonine and tyrosine-containing substrates. It phosphorylates serine- and arginine-rich (SR) proteins of the spliceosomal complex and may be a constituent of a network of regulatory mechanisms that enable SR proteins to control RNA splicing. It can phosphorylate: SRSF1, SRSF3 and PTPN1 (PMID: 10480872; 19168442). It also regulates the alternative splicing of tissue factor (F3) pre-mRNA in endothelial cells (PMID: 19168442). Elevated CLK1 activity is frequently detected in cancers, where it alters splice isoform balance to promote proliferation, invasion and chemoresistance, making it an emerging therapeutic target.

## Storage

Storage:

Store at -80°C.

**The product is shipped with ice packs. Upon receipt, store it immediately at -80°C**

Storage Buffer:

PBS only, pH7.3

For technical support and original validation data for this product please contact:

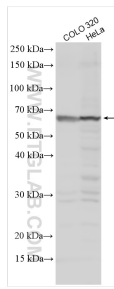
T: 4006900926

E: [Proteintech-CN@ptglab.com](mailto:Proteintech-CN@ptglab.com)

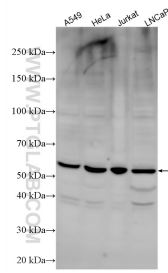
W: [ptgcn.com](http://ptgcn.com)

**This product is exclusively available under Proteintech Group brand and is not available to purchase from any other manufacturer.**

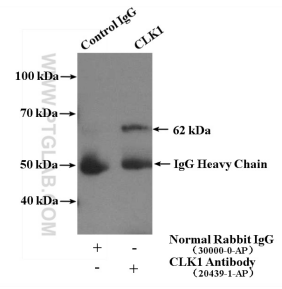
## Selected Validation Data



Various lysates were subjected to SDS PAGE followed by western blot with 20439-1-AP (CLK1 antibody) at dilution of 1:400 incubated at room temperature for 1.5 hours. This data was developed using the same antibody clone with 20439-1-PBS in a different storage buffer formulation.



Various lysates were subjected to SDS PAGE followed by western blot with 20439-1-AP (CLK1 antibody) at dilution of 1:1000 incubated at room temperature for 1.5 hours. This data was developed using the same antibody clone with 20439-1-PBS in a different storage buffer formulation.



IP result of anti-CLK1 (IP:20439-1-AP, 4ug; Detection:20439-1-AP 1:300) with COLO 320 cells lysate 2000ug. This data was developed using the same antibody clone with 20439-1-PBS in a different storage buffer formulation.