

For Research Use Only

RNF6 Polyclonal antibody, PBS Only

Catalog Number: 20437-1-PBS

Featured Product



Basic Information

Catalog Number:

20437-1-PBS

Concentration:

1 mg/ml

Source:

Rabbit

Isotype:

IgG

Immunogen Catalog Number:

AG14209

GenBank Accession Number:

BC034688

GeneID (NCBI):

6049

UNIPROT ID:

Q9Y252

Full Name:

ring finger protein (C3H2C3 type) 6

Calculated MW:

685 aa, 78 kDa

Observed MW:

78 kDa

Purification Method:

Antigen affinity purification

Applications

Tested Applications:

WB, IF/ICC, IP, Indirect ELISA

Species Specificity:

human, mouse

Background Information

RNF6 was firstly cloned in a genetic study of chromosomal rearrangements in myeloproliferative disorders, mapping to chromosome 13q12.12 [PMID:10331950]. It containing a coiled-coil domain at the N-terminus, and a RING-H2 finger at the C-terminus which is responsible for its ubiquitin ligase activity. It also activate Inha gene expression by participating in a protein complex binding to the promoter region [PMID:11971979]. In addition, LIMK1 is a substrate of RNF6 and the RNF6-induced LIMK1 polyubiquitination is mediated via K48 of ubiquitin and leads to proteasomal degradation of the kinase [PMID:16204183].

Storage

Storage:

Store at -80°C.

The product is shipped with ice packs. Upon receipt, store it immediately at -80°C

Storage Buffer:

PBS Only

For technical support and original validation data for this product please contact:

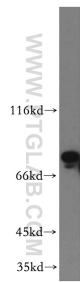
T: 4006900926

E: Proteintech-CN@ptglab.com

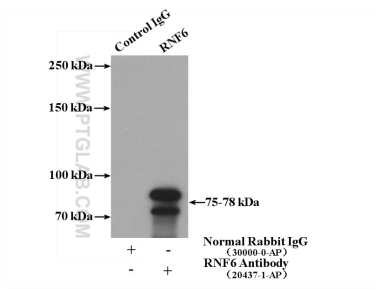
W: ptgcn.com

This product is exclusively available under Proteintech Group brand and is not available to purchase from any other manufacturer.

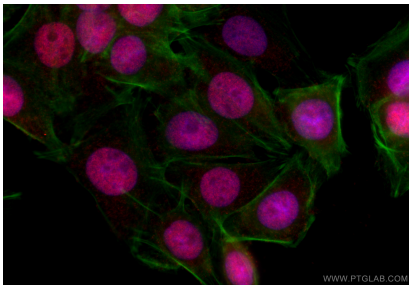
Selected Validation Data



mouse testis tissue were subjected to SDS PAGE followed by western blot with 20437-1-AP (RNF6 antibody) at dilution of 1:800 incubated at room temperature for 1.5 hours. This data was developed using the same antibody clone with 20437-1-PBS in a different storage buffer formulation.



IP result of anti-RNF6 (IP:20437-1-AP, 4ug; Detection:20437-1-AP 1:800) with mouse testis tissue lysate 4000ug. This data was developed using the same antibody clone with 20437-1-PBS in a different storage buffer formulation.



Immunofluorescent analysis of (4% PFA) fixed SW480 cells using RNF6 antibody (20437-1-AP) at dilution of 1:200 and CoraLite®594-Conjugated Goat Anti-Rabbit IgG(H+L) (SA00013-4), CL488-phalloidin (green). This data was developed using the same antibody clone with 20437-1-PBS in a different storage buffer formulation.