

For Research Use Only

# PSEN1 Polyclonal antibody

Catalog Number: 20434-1-AP **1 Publications**



## Basic Information

<b>Catalog Number:</b> 20434-1-AP	<b>GenBank Accession Number:</b> BC011729	<b>Purification Method:</b> Antigen affinity purification
<b>Size:</b> 287 µg/ml	<b>GeneID (NCBI):</b> 5663	<b>Recommended Dilutions:</b> IHC 1:50-1:200 IF 1:50-1:500
<b>Source:</b> Rabbit	<b>UNIPROT ID:</b> P49768	
<b>Isotype:</b> IgG	<b>Full Name:</b> presenilin 1	
<b>Immunogen Catalog Number:</b> AG14135	<b>Calculated MW:</b> 467 aa, 53 kDa	
	<b>Observed MW:</b> 18 kDa	

## Applications

<b>Tested Applications:</b> IF/ICC, IF-P, IHC, ELISA	<b>Positive Controls:</b> IHC : human gliomas tissue, mouse brain tissue IF : mouse brain tissue, HEK-293 cells
<b>Cited Applications:</b> IF	
<b>Species Specificity:</b> human, mouse	
<b>Cited Species:</b> mouse	
<b>Note-IHC: suggested antigen retrieval with TE buffer pH 9.0; (*) Alternatively, antigen retrieval may be performed with citrate buffer pH 6.0</b>	

## Background Information

PSEN1(presenilin-1) is also named as AD3, PS1, PSNL1 and belongs to the peptidase A22A family. It directly influences Netrin/DCC signaling with cell type precision and spatiotemporal specificity, and is a key neural circuit builder that gates the spatiotemporal pattern of guidance signaling, thereby ensuring neural projections occur with high fidelity(PMID:21215373). The 46-kDa PSEN1 holoprotein is cleaved into a ~30-kDa N-terminal fragment (NTF) and a ~20-kDa C-terminal fragment (CTF) by the 26S proteasome(PMID:10527805). It has 7 isoforms produced by alternative splicing. This antibody can recognize all the isoforms except isoform 4 (21 kDa).

## Notable Publications

Author	Pubmed ID	Journal	Application
Zequn Yin	33328962	Front Aging Neurosci	IF

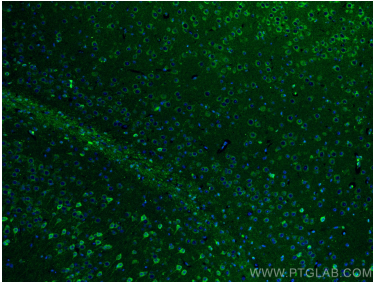
## Storage

**Storage:**  
Store at -20°C. Stable for one year after shipment.  
**Storage Buffer:**  
PBS with 0.02% sodium azide and 50% glycerol pH 7.3.  
Aliquoting is unnecessary for -20°C storage

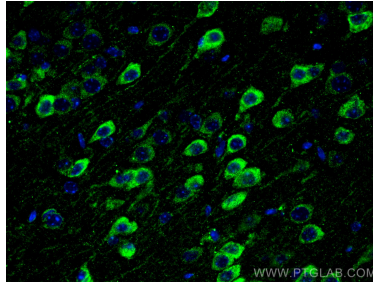
For technical support and original validation data for this product please contact:  
T: 4006900926 E: Proteintech-CN@ptglab.com W: ptgcn.com

This product is exclusively available under Proteintech Group brand and is not available to purchase from any other manufacturer.

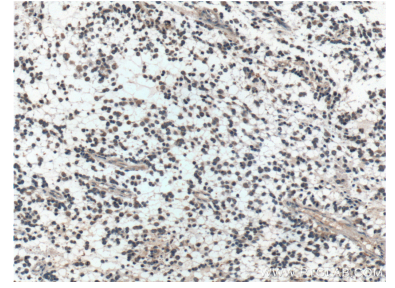
## Selected Validation Data



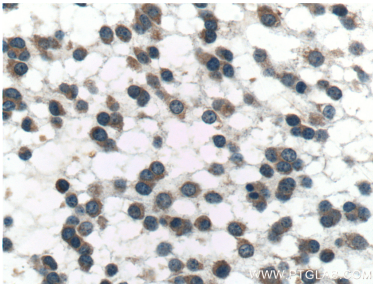
Immunofluorescent analysis of (4% PFA) fixed mouse brain tissue using PSEN1 antibody (20434-1-AP) at dilution of 1:200 and CoraLite®488-Conjugated AffiniPure Goat Anti-Rabbit IgG(H+L).



Immunofluorescent analysis of (4% PFA) fixed mouse brain tissue using PSEN1 antibody (20434-1-AP) at dilution of 1:200 and CoraLite®488-Conjugated AffiniPure Goat Anti-Rabbit IgG(H+L).



Immunohistochemical analysis of paraffin-embedded human gliomas tissue slide using 20434-1-AP (PSEN1 Antibody) at dilution of 1:100 (under 10x lens).



Immunohistochemical analysis of paraffin-embedded human gliomas tissue slide using 20434-1-AP (PSEN1 Antibody) at dilution of 1:100 (under 40x lens).