

For Research Use Only

SPP Polyclonal antibody

Catalog Number: 20416-1-AP

Featured Product

5 Publications



Basic Information

Catalog Number:

20416-1-AP

Concentration:

133 µg/ml

Source:

Rabbit

Isotype:

IgG

Immunogen Catalog Number:

AG14158

GenBank Accession Number:

BC008938

GeneID (NCBI):

81502

UNIPROT ID:

Q8TCT9

Full Name:

histocompatibility (minor) 13

Calculated MW:

377 aa, 41 kDa

Observed MW:

45 kDa, 100 kDa

Purification Method:

Antigen affinity purification

Recommended Dilutions:

WB 1:500-1:2000

IHC 1:20-1:200

Applications

Tested Applications:

WB, IHC, ELISA

Cited Applications:

WB, IHC

Species Specificity:

human, mouse

Cited Species:

human, mouse

Note-IHC: suggested antigen retrieval with TE buffer pH 9.0; (*) Alternatively, antigen retrieval may be performed with citrate buffer pH 6.0

Positive Controls:

WB : HEK-293 cells, mouse liver tissue, mouse kidney tissue, U2OS cells

IHC : human hepatocirrhosis tissue,

Background Information

Notable Publications

Author	Pubmed ID	Journal	Application
Haiyan Yang	36153332	Cell Death Dis	IHC, WB
Schedin-Weiss Sophia S	23717518	PLoS One	
Jun Liu	36046831	Front Pharmacol	WB

Storage

Storage:

Store at -20°C. Stable for one year after shipment.

Storage Buffer:

PBS with 0.02% sodium azide and 50% glycerol, pH7.3

Aliquoting is unnecessary for -20°C storage

For technical support and original validation data for this product please contact:

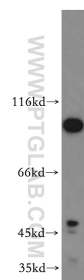
T: 4006900926

E: Proteintech-CN@ptglab.com

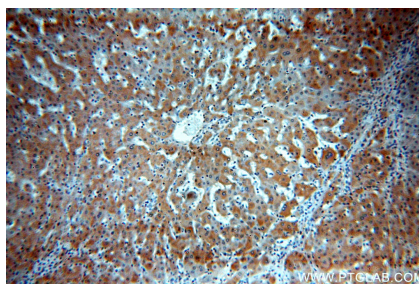
W: ptgcn.com

This product is exclusively available under Proteintech Group brand and is not available to purchase from any other manufacturer.

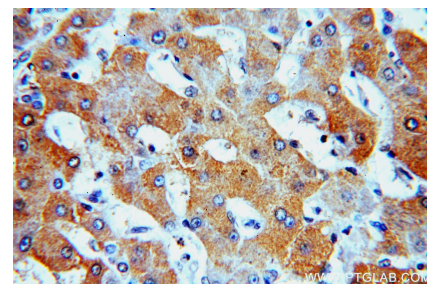
Selected Validation Data



HEK-293 cells were subjected to SDS PAGE followed by western blot with 20416-1-AP (SPP antibody) at dilution of 1:300 incubated at room temperature for 1.5 hours.



Immunohistochemical analysis of paraffin-embedded human hepatocirrhosis using 20416-1-AP (SPP antibody) at dilution of 1:100 (under 10x lens).



Immunohistochemical analysis of paraffin-embedded human hepatocirrhosis using 20416-1-AP (SPP antibody) at dilution of 1:100 (under 40x lens).