

For Research Use Only

SLC2A10 Polyclonal antibody

Catalog Number: 20405-1-AP



Basic Information

Catalog Number:

20405-1-AP

Size:

450 µg/ml

Source:

Rabbit

Isotype:

IgG

Immunogen Catalog Number:

AG14210

GenBank Accession Number:

BC101657

GeneID (NCBI):

81031

UNIPROT ID:

O95528

Full Name:

solute carrier family 2 (facilitated glucose transporter), member 10

Calculated MW:

541 aa, 57 kDa

Observed MW:

57-66 kDa

Purification Method:

Antigen affinity purification

Recommended Dilutions:

WB 1:500-1:1000

Applications

Tested Applications:

WB, ELISA

Species Specificity:

human, mouse

Positive Controls:

WB : Jurkat cells,

Background Information

SLC2A10, also known as GLUT10, is a facilitative glucose transporter. It has been shown to be located in mitochondria, the nuclear envelope and the endoplasmic reticulum (ER) (PMID: 32307537). SLC2A10 is involved in the regulation of glucose homeostasis. Arterial Tortuosity Syndrome (ATS) is a rare autosomal recessive connective tissue disorder caused by mutations in the human SLC2A10 gene (PMID: 21553381).

Storage

Storage:

Store at -20°C. Stable for one year after shipment.

Storage Buffer:

PBS with 0.02% sodium azide and 50% glycerol pH 7.3.

Aliquoting is unnecessary for -20°C storage

For technical support and original validation data for this product please contact:

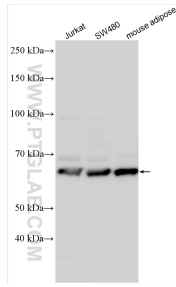
T: 4006900926

E: Proteintech-CN@ptglab.com

W: ptgcn.com

This product is exclusively available under Proteintech Group brand and is not available to purchase from any other manufacturer.

Selected Validation Data



Various lysates were subjected to SDS PAGE followed by western blot with 20405-1-AP (SLC2A10 antibody) at dilution of 1:600 incubated at room temperature for 1.5 hours.