

For Research Use Only

# SAA4 Polyclonal antibody

Catalog Number: 20398-1-AP



## Basic Information

<b>Catalog Number:</b> 20398-1-AP	<b>GenBank Accession Number:</b> BC007026	<b>Purification Method:</b> Antigen affinity purification
<b>Size:</b> 550 µg/ml	<b>GeneID (NCBI):</b> 6291	<b>Recommended Dilutions:</b> WB 1:1000-1:6000 IHC 1:20-1:200
<b>Source:</b> Rabbit	<b>UNIPROT ID:</b> P35542	
<b>Isotype:</b> IgG	<b>Full Name:</b> serum amyloid A4, constitutive	
<b>Immunogen Catalog Number:</b> AG14081	<b>Calculated MW:</b> 130 aa, 15 kDa	
	<b>Observed MW:</b> 12-15 kDa	

## Applications

### Tested Applications:

IHC, WB, ELISA

### Species Specificity:

human

**Note-IHC: suggested antigen retrieval with TE buffer pH 9.0; (\*) Alternatively, antigen retrieval may be performed with citrate buffer pH 6.0**

### Positive Controls:

WB : human plasma,

IHC : human liver tissue,

## Background Information

### Storage

#### Storage:

Store at -20°C. Stable for one year after shipment.

#### Storage Buffer:

PBS with 0.02% sodium azide and 50% glycerol pH 7.3.

Aliquoting is unnecessary for -20°C storage

For technical support and original validation data for this product please contact:

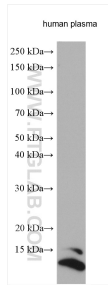
T: 4006900926

E: Proteintech-CN@ptglab.com

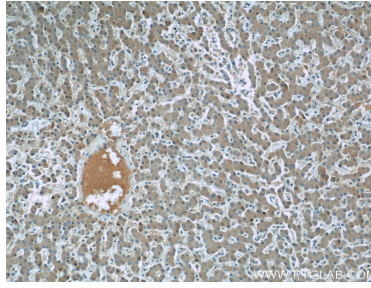
W: ptgcn.com

This product is exclusively available under Proteintech Group brand and is not available to purchase from any other manufacturer.

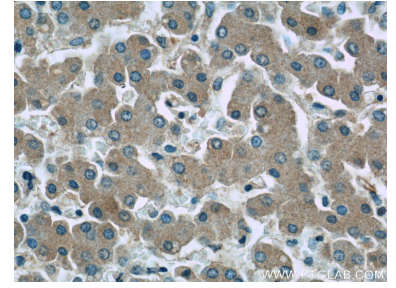
## Selected Validation Data



Human plasma lysates were subjected to SDS PAGE followed by western blot with 20398-1-AP (SAA4 antibody) at dilution of 1:3000 incubated at room temperature for 1.5 hours.



Immunohistochemical analysis of paraffin-embedded human liver slide using 20398-1-AP (SAA4 Antibody) at dilution of 1:50.



Immunohistochemical analysis of paraffin-embedded human liver slide using 20398-1-AP (SAA4 Antibody) at dilution of 1:50.