

PLEKHF1 Polyclonal antibody

Catalog Number: 20389-1-AP

Featured Product

2 Publications

Basic Information

Catalog Number:

20389-1-AP

Size:

300 µg/ml

Source:

Rabbit

Isotype:

IgG

Immunogen Catalog Number:

AG14228

GenBank Accession Number:

BC002744

GeneID (NCBI):

79156

UNIPROT ID:

Q96S99

Full Name:

pleckstrin homology domain
containing, family F (with FYVE
domain) member 1

Calculated MW:

279 aa, 31 kDa

Observed MW:

31 kDa

Purification Method:

Antigen affinity purification

Recommended Dilutions:

WB 1:500-1:1000

IHC 1:20-1:200

IF/ICC 1:10-1:100

Applications

Tested Applications:

IF/ICC, IHC, WB, ELISA

Cited Applications:

WB, IF

Species Specificity:

human, mouse

Cited Species:

human, mouse

**Note-IHC: suggested antigen retrieval with
TE buffer pH 9.0; (*) Alternatively, antigen
retrieval may be performed with citrate
buffer pH 6.0**

Positive Controls:

WB : human skeletal muscle tissue, human kidney
tissue, mouse lung tissue, mouse skeletal muscle
tissue, mouse spleen tissue, mouse thymus tissue

IHC : human brain tissue,

IF/ICC : HepG2 cells,

Background Information

PLEKHF1, also named as APPD, LAPF, and ZFYVE15, is a 279 amino acid protein, which contains one PH domain and one FYVE-type zinc finger. PLEKHF1 translocates to lysosome during apoptosis, localizing in the nucleus and cytoplasm. PLEKHF1 is highly expressed in heart and skeletal muscle and weakly expressed in brain, thymus, spleen, kidney, liver, small intestine, placenta and lung. PLEKHF1 may induce apoptosis through the lysosomal-mitochondrial pathway. PLEKHF1 modulates the protein content of the plasma membrane and was involved in different endocytosis events.

Notable Publications

Author	Pubmed ID	Journal	Application
Natrajan Rachael R	22433433	Breast Cancer Res	WB
Lifeng Yan	37340175	Sci China Life Sci	WB,IF

Storage

Storage:

Store at -20°C. Stable for one year after shipment.

Storage Buffer:

PBS with 0.02% sodium azide and 50% glycerol pH 7.3.

Aliquoting is unnecessary for -20°C storage

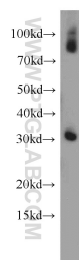
For technical support and original validation data for this product please contact:

T: 4006900926

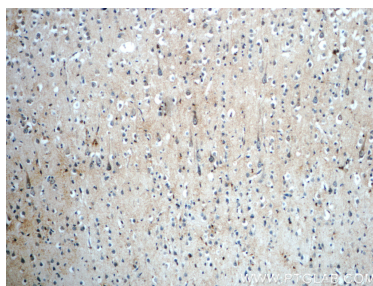
E: Proteintech-CN@ptglab.comW: ptgcn.com

**This product is exclusively available under Proteintech
Group brand and is not available to purchase from any
other manufacturer.**

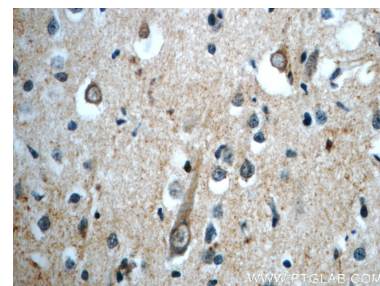
Selected Validation Data



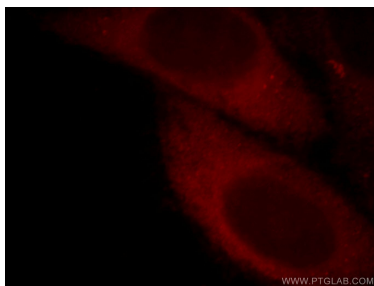
human skeletal muscle tissue were subjected to SDS PAGE followed by western blot with 20389-1-AP (PLEKHF1 antibody) at dilution of 1:500 incubated at room temperature for 1.5 hours.



Immunohistochemical analysis of paraffin-embedded human brain slide using 20389-1-AP (PLEKHF1 Antibody) at dilution of 1:50.



Immunohistochemical analysis of paraffin-embedded human brain slide using 20389-1-AP (PLEKHF1 Antibody) at dilution of 1:50.



Immunofluorescent analysis of HepG2 cells, using PLEKHF1 antibody 20389-1-AP at 1:25 dilution and Rhodamine-labeled goat anti-rabbit IgG (red).