

For Research Use Only

RbAp46 Polyclonal antibody

Catalog Number: 20365-1-AP

Featured Product

7 Publications



Basic Information

Catalog Number:

20365-1-AP

Size:

450 ug/ml

Source:

Rabbit

Isotype:

IgG

GenBank Accession Number:

NM_002893

GeneID (NCBI):

5931

UNIPROT ID:

Q16576

Full Name:

retinoblastoma binding protein 7

Calculated MW:

48 kDa

Observed MW:

52 kDa

Purification Method:

Antigen affinity purification

Recommended Dilutions:

WB 1:2000-1:12000

IP 0.5-4.0 ug for 1.0-3.0 mg of total protein lysate

IHC 1:50-1:500

IF/ICC 1:500-1:2000

Applications

Tested Applications:

WB, IHC, IF/ICC, IP, ELISA

Cited Applications:

WB, IHC

Species Specificity:

human, mouse, rat

Cited Species:

human

Positive Controls:

WB : A431 cells, COS-7 cells, HEK-293T cells, HeLa cells

IP : A431 cells,

IHC : human breast cancer tissue, human cervical cancer tissue

IF/ICC : A431 cells,

Note-IHC: suggested antigen retrieval with TE buffer pH 9.0; (*) Alternatively, antigen retrieval may be performed with citrate buffer pH 6.0

Background Information

RBBP7, also named as RBAP46, belongs to the WD repeat RBAP46/RBAP48/MSI1 family. RBBP7 is a core histone-binding subunit that may target chromatin remodeling factors, histone acetyltransferases and histone deacetylases to their histone substrates in a manner that is regulated by nucleosomal DNA. It is a component of several complexes which regulate chromatin metabolism. The antibody is specific to RBBP7.

Notable Publications

Author	Pubmed ID	Journal	Application
Jianqing Wang	31636385	Oncogene	WB
Ning Yu	30546458	Oncol Lett	WB,IHC
Can Ma	29758199	Biochem Biophys Res Commun	WB,IHC

Storage

Storage:

Store at -20°C. Stable for one year after shipment.

Storage Buffer:

PBS with 0.02% sodium azide and 50% glycerol pH 7.3.

Aliquoting is unnecessary for -20°C storage

For technical support and original validation data for this product please contact:

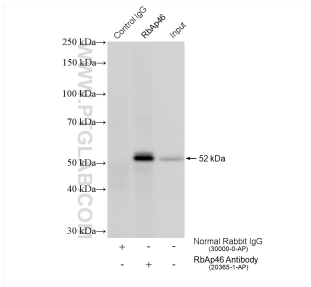
T: 4006900926

E: Proteintech-CN@ptglab.com

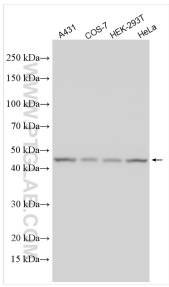
W: ptgcn.com

This product is exclusively available under Proteintech Group brand and is not available to purchase from any other manufacturer.

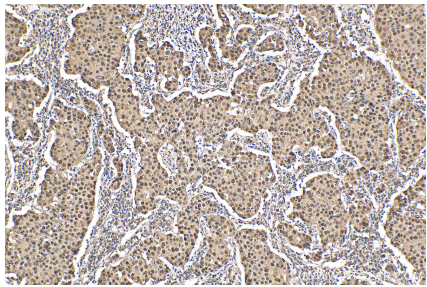
Selected Validation Data



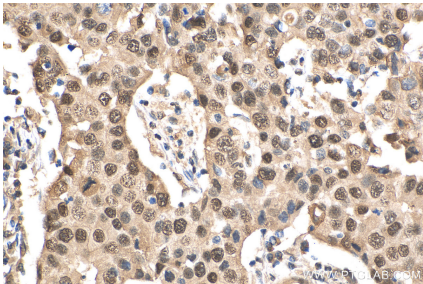
IP result of anti-RbAp46 (IP:20365-1-AP, 4ug; Detection:20365-1-AP 1:4000) with A431 cells lysate 2640 ug.



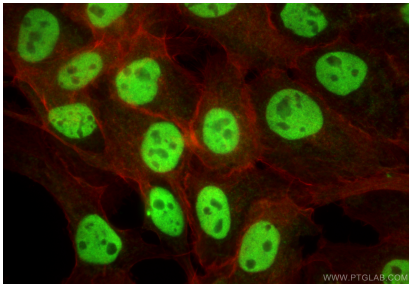
Various lysates were subjected to SDS PAGE followed by western blot with 20365-1-AP (RbAp46 antibody) at dilution of 1:6000 incubated at room temperature for 1.5 hours.



Immunohistochemical analysis of paraffin-embedded human breast cancer tissue slide using 20365-1-AP (RbAp46 antibody) at dilution of 1:200 (under 10x lens). Heat mediated antigen retrieval with Tris-EDTA buffer (pH 9.0).



Immunohistochemical analysis of paraffin-embedded human breast cancer tissue slide using 20365-1-AP (RbAp46 antibody) at dilution of 1:200 (under 40x lens). Heat mediated antigen retrieval with Tris-EDTA buffer (pH 9.0).



Immunofluorescent analysis of (4% PFA) fixed A431 cells using RbAp46 antibody (20365-1-AP) at dilution of 1:1000 and CoraLite@488-Conjugated Goat Anti-Rabbit IgG(H+L) (SA00013-2), CL594-Phalloidin (red).