

For Research Use Only

SLC1A5/ASCT2 Polyclonal antibody, PBS Only

Catalog Number: 20350-1-PBS

Featured Product



Basic Information

Catalog Number:

20350-1-PBS

Concentration:

1 mg/ml

Source:

Rabbit

Isotype:

IgG

Immunogen Catalog Number:

AG14182

GenBank Accession Number:

BC000062

GeneID (NCBI):

6510

UNIPROT ID:

Q15758

Full Name:

solute carrier family 1 (neutral amino acid transporter), member 5

Calculated MW:

541 aa, 57 kDa

Observed MW:

55-70 kDa

Purification Method:

Antigen affinity purification

Applications

Tested Applications:

WB, IHC, IF/ICC, IF-P, IF-Fro, FC (Intra), Indirect ELISA

Species Specificity:

human, mouse

Background Information

SLC1A5 (Solute Carrier Family 1, member 5), also named as ASCT2, a major glutamine transporter belonging to the SLC1 family and localized in the plasma membrane of several body districts. Consistent with the functions exerted by glutamine, SLC1A5 is involved in uptake of essential amino acids, activation of mTORC1 and glutamine-dependent tumor cell survival and growth. SLC1A5 is highly expressed in various malignancies and plays a critical role in the transformation, growth and survival of cancer cells (PMID: 30234109). High SLC1A5 expression is associated with poor prognosis in clear-cell renal cell carcinoma (PMID: 26599282).

Storage

Storage:

Store at -80°C.

The product is shipped with ice packs. Upon receipt, store it immediately at -80°C

Storage Buffer:

PBS only, pH7.3

For technical support and original validation data for this product please contact:

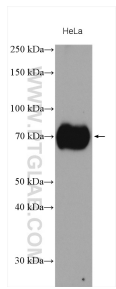
T: 4006900926

E: Proteintech-CN@ptglab.com

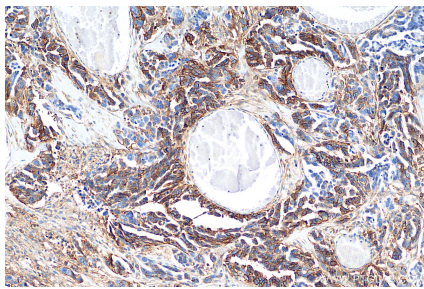
W: ptgcn.com

This product is exclusively available under Proteintech Group brand and is not available to purchase from any other manufacturer.

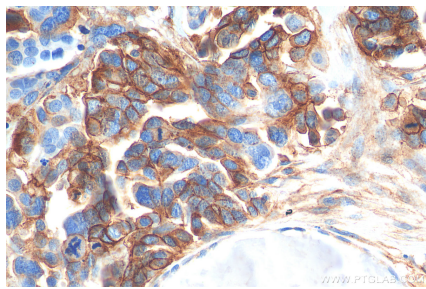
Selected Validation Data



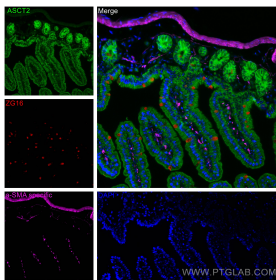
HeLa cells were subjected to SDS PAGE followed by western blot with 20350-1-AP (SLC1A5/ASCT2 antibody) at dilution of 1:8000 incubated at room temperature for 1.5 hours. This data was developed using the same antibody clone with 20350-1-PBS in a different storage buffer formulation.



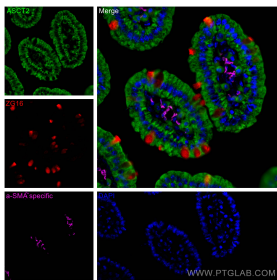
Immunohistochemical analysis of paraffin-embedded human colon cancer tissue slide using 20350-1-AP (SLC1A5/ASCT2 antibody) at dilution of 1:800 (under 10x lens). Heat mediated antigen retrieval with Tris-EDTA buffer (pH 9.0). This data was developed using the same antibody clone with 20350-1-PBS in a different storage buffer formulation.



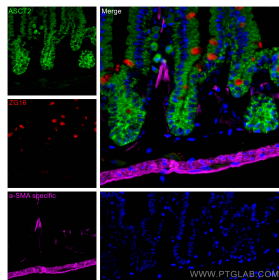
Immunohistochemical analysis of paraffin-embedded human colon cancer tissue slide using 20350-1-AP (ASCT2 antibody) at dilution of 1:800 (under 40x lens). Heat mediated antigen retrieval with Tris-EDTA buffer (pH 9.0). This data was developed using the same antibody clone with 20350-1-PBS in a different storage buffer formulation.



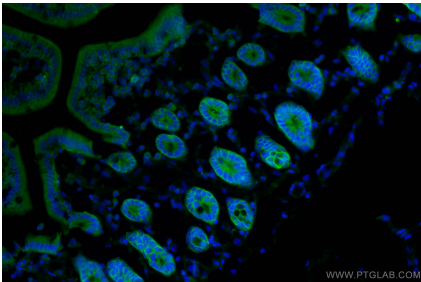
Immunofluorescent analysis of (4% PFA) fixed mouse small intestine tissue using SLC1A5/ASCT2 antibody (20350-1-AP) at dilution of 1:200 and CoraLite®488-Conjugated AffiniPure Goat Anti-Rabbit IgG(H+L), ZG16 antibody (67389-1-Ig, Clone: 1A7B9, red), CoraLite®594 smooth muscle actin specific antibody (CL594-80008, Clone: 5H7, Magenta). This data was developed using the same antibody clone with 20350-1-PBS in a different storage buffer formulation.



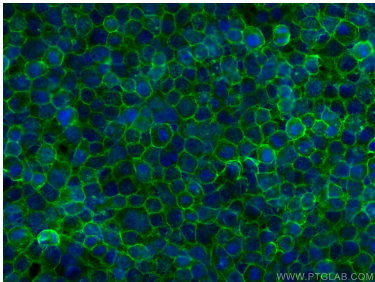
Immunofluorescent analysis of (4% PFA) fixed mouse small intestine tissue using ASCT2 antibody (20350-1-AP) at dilution of 1:200 and CoraLite®488-Conjugated AffiniPure Goat Anti-Rabbit IgG(H+L), ZG16 antibody (67389-1-Ig, Clone: 1A7B9, red), CoraLite®594 smooth muscle actin specific antibody (CL594-80008, Clone: 5H7, Magenta). This data was developed using the same antibody clone with 20350-1-PBS in a different storage buffer formulation.



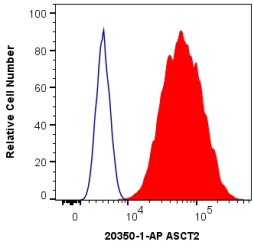
Immunofluorescent analysis of (4% PFA) fixed mouse small intestine tissue using ASCT2 antibody (20350-1-AP) at dilution of 1:200 and CoraLite®488-Conjugated AffiniPure Goat Anti-Rabbit IgG(H+L), ZG16 antibody (67389-1-Ig, Clone: 1A7B9, red), CoraLite®594 smooth muscle actin specific antibody (CL594-80008, Clone: 5H7, Magenta). This data was developed using the same antibody clone with 20350-1-PBS in a different storage buffer formulation.



Immunofluorescent analysis of (4% PFA) fixed frozen OCT-embedded mouse small intestine tissue tissue using 20350-1-AP (SLC1A5/ASCT2 antibody) at dilution of 1:200 and CoraLite®488-Conjugated AffiniPure Goat Anti-Rabbit IgG(H+L). This data was developed using the same antibody clone with 20350-1-PBS in a different storage buffer formulation.



Immunofluorescent analysis of (-20°C Ethanol) fixed HEK-293 cells using SLC1A5/ASCT2 antibody (20350-1-AP) at dilution of 1:400 and CoraLite®488-Conjugated AffiniPure Goat Anti-Rabbit IgG(H+L). This data was developed using the same antibody clone with 20350-1-PBS in a different storage buffer formulation.



1X10⁶ HeLa cells were intracellularly stained with 0.4 ug Anti-Human SLC1A5/ASCT2 (20350-1-AP) and CoraLite®488-Conjugated AffiniPure Goat Anti-Rabbit IgG(H+L) at dilution 1:1000 (red), or 0.4 ug Isotype Control. Cells were fixed with 4% PFA and permeabilized with Flow Cytometry Perm Buffer (PF00011-C). This data was developed using the same antibody clone with 20350-1-PBS in a different storage buffer formulation.