

For Research Use Only

SLC18A1 Polyclonal antibody

Catalog Number: 20340-1-AP



Basic Information

Catalog Number:

20340-1-AP

Size:

600 µg/ml

Source:

Rabbit

Isotype:

IgG

Immunogen Catalog Number:

AG14131

GenBank Accession Number:

BC009387

GeneID (NCBI):

6570

UNIPROT ID:

P54219

Full Name:

solute carrier family 18 (vesicular monoamine), member 1

Calculated MW:

525 aa, 56 kDa

Observed MW:

50 kDa, 56 kDa

Purification Method:

Antigen affinity purification

Recommended Dilutions:

WB 1:500-1:2000

IHC 1:20-1:200

Applications

Tested Applications:

IHC, WB, ELISA

Species Specificity:

human, rat

Note-IHC: suggested antigen retrieval with TE buffer pH 9.0; (*) Alternatively, antigen retrieval may be performed with citrate buffer pH 6.0

Positive Controls:

WB: HEK-293 cells, A549 cells, C6 cells, HeLa cells, HepG2 cells

IHC: human placenta tissue,

Background Information

Storage

Storage:

Store at -20°C. Stable for one year after shipment.

Storage Buffer:

PBS with 0.02% sodium azide and 50% glycerol pH 7.3.

Aliquoting is unnecessary for -20°C storage

For technical support and original validation data for this product please contact:

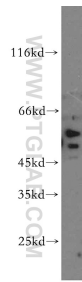
T: 4006900926

E: Proteintech-CN@ptglab.com

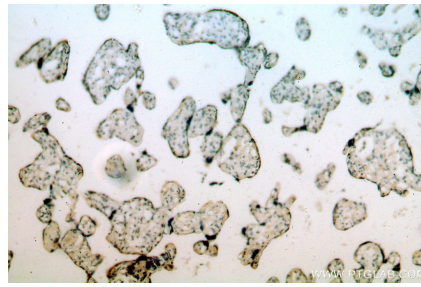
W: ptgcn.com

This product is exclusively available under Proteintech Group brand and is not available to purchase from any other manufacturer.

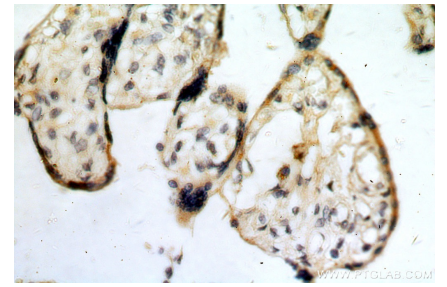
Selected Validation Data



HEK-293 cells were subjected to SDS PAGE followed by western blot with 20340-1-AP (SLC18A1 antibody) at dilution of 1:500 incubated at room temperature for 1.5 hours.



Immunohistochemical analysis of paraffin-embedded human placenta using 20340-1-AP (SLC18A1 antibody) at dilution of 1:100 (under 10x lens).



Immunohistochemical analysis of paraffin-embedded human placenta using 20340-1-AP (SLC18A1 antibody) at dilution of 1:100 (under 40x lens).