

For Research Use Only

TADA1L Polyclonal antibody

Catalog Number: 20337-1-AP



Basic Information

Catalog Number: 20337-1-AP	GenBank Accession Number: BC015401	Purification Method: Antigen affinity purification
Size: 850 µg/ml	GeneID (NCBI): 117143	Recommended Dilutions: WB 1:200-1:1000 IHC 1:20-1:200 IF 1:10-1:100
Source: Rabbit	UNIPROT ID: Q96BN2	
Isotype: IgG	Full Name: transcriptional adaptor 1 (HF11 homolog, yeast)-like	
Immunogen Catalog Number: AG14118	Calculated MW: 335 aa, 37 kDa	
	Observed MW: 38 kDa	

Applications

Tested Applications: IF, IHC, WB, ELISA	Positive Controls: WB : mouse testis tissue, NIH/3T3 cells IHC : human testis tissue, IF : HepG2 cells,
Species Specificity: human, mouse	
Note-IHC: suggested antigen retrieval with TE buffer pH 9.0; (*) Alternatively, antigen retrieval may be performed with citrate buffer pH 6.0	

Background Information

The function of TADA1L has not been widely studied, and is yet to be fully elucidated. It probably involved in transcriptional regulation. The MW of this protein is 37 kDa, and Catalog#20337-1-AP specially recognises the 37 kDa protein.

Storage

Storage:
Store at -20°C. Stable for one year after shipment.
Storage Buffer:
PBS with 0.02% sodium azide and 50% glycerol pH 7.3.
Aliquoting is unnecessary for -20°C storage

For technical support and original validation data for this product please contact:

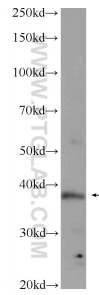
T: 4006900926

E: Proteintech-CN@ptglab.com

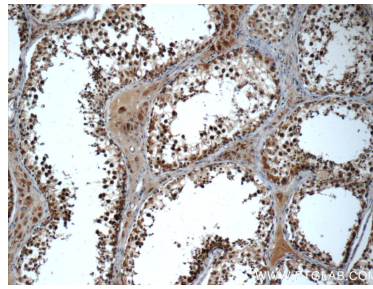
W: ptgcn.com

This product is exclusively available under Proteintech Group brand and is not available to purchase from any other manufacturer.

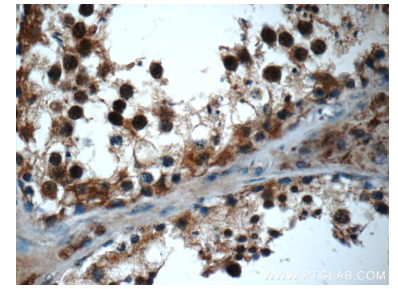
Selected Validation Data



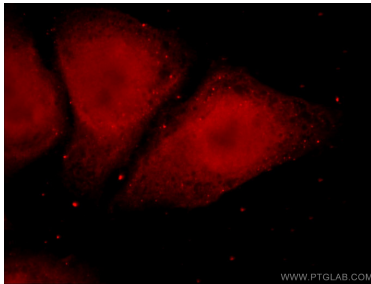
mouse testis tissue were subjected to SDS PAGE followed by western blot with 20337-1-AP (TADA1L Antibody) at dilution of 1:300 incubated at room temperature for 1.5 hours.



Immunohistochemical analysis of paraffin-embedded human testis tissue slide using 20337-1-AP (TADA1L Antibody) at dilution of 1:50 (under 10x lens).



Immunohistochemical analysis of paraffin-embedded human testis tissue slide using 20337-1-AP (TADA1L Antibody) at dilution of 1:50 (under 40x lens).



Immunofluorescent analysis of HepG2 cells using 20337-1-AP (TADA1L antibody) at dilution of 1:25 and Alexa Fluor 594-conjugated AffiniPure Goat Anti-Rabbit IgG(H+L).