

For Research Use Only

# P2RY13 Polyclonal antibody

Catalog Number: 20335-1-AP

2 Publications



## Basic Information

Catalog Number:

20335-1-AP

Concentration:

600 ug/ml

Source:

Rabbit

Isotype:

IgG

Immunogen Catalog Number:

AG14108

GenBank Accession Number:

BC041116

GeneID (NCBI):

53829

UNIPROT ID:

Q9BPV8

Full Name:

purinergic receptor P2Y, G-protein coupled, 13

Calculated MW:

354 aa, 41 kDa

Observed MW:

45 kDa

Purification Method:

Antigen affinity purification

Recommended Dilutions:

WB 1:500-1:2000

IHC 1:20-1:200

## Applications

Tested Applications:

WB, IHC, ELISA

Cited Applications:

WB, IHC

Species Specificity:

human

Cited Species:

human

**Note-IHC: suggested antigen retrieval with TE buffer pH 9.0; (\*) Alternatively, antigen retrieval may be performed with citrate buffer pH 6.0**

Positive Controls:

WB : HepG2 cells,

IHC : human small intestine tissue,

## Background Information

P2RY13 (also named GPR86 or GPR94) is a G protein-coupled receptor (GPCR), which is involved in the pathogenesis of inflammation and immune disorders (PMID: 35982893). Several studies have reported that P2RY13 is a key regulator of cholesterol transport and hepatic HDL endocytosis and is involved in bone formation, remodeling, cell survival, and neuroprotection (PMID: 38045624).

## Notable Publications

Author	Pubmed ID	Journal	Application
Ruiqiao He	38049696	Nat Methods	WB
Jie Chu	38045624	Health Sci Rep	IHC

## Storage

Storage:

Store at -20°C. Stable for one year after shipment.

Storage Buffer:

PBS with 0.02% sodium azide and 50% glycerol, pH7.3

Aliquoting is unnecessary for -20°C storage

For technical support and original validation data for this product please contact:

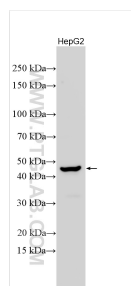
T: 4006900926

E: [Proteintech-CN@ptglab.com](mailto:Proteintech-CN@ptglab.com)

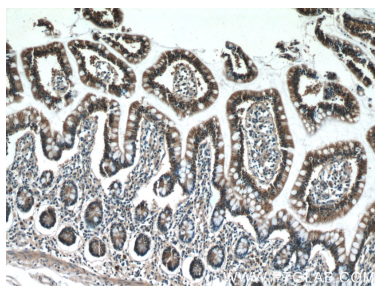
W: [ptgcn.com](http://ptgcn.com)

This product is exclusively available under Proteintech Group brand and is not available to purchase from any other manufacturer.

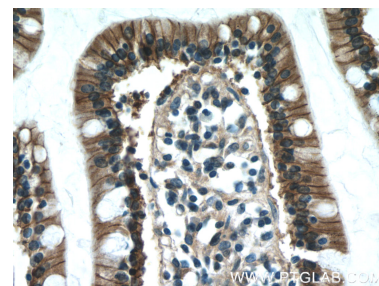
## Selected Validation Data



Various lysates were subjected to SDS PAGE followed by western blot with 20335-1-AP (P2RY13 antibody) at dilution of 1:1000 incubated at room temperature for 1.5 hours.



Immunohistochemical analysis of paraffin-embedded human small intestine tissue slide using 20335-1-AP (P2RY13 Antibody) at dilution of 1:50 (under 10x lens).



Immunohistochemical analysis of paraffin-embedded human small intestine tissue slide using 20335-1-AP (P2RY13 Antibody) at dilution of 1:50 (under 40x lens).