

For Research Use Only

MPDU1 Polyclonal antibody

Catalog Number: 20321-1-AP



Basic Information

| | | |
|---|---|--|
| Catalog Number: 20321-1-AP | GenBank Accession Number: BC001898 | Purification Method: Antigen affinity purification |
| Concentration: 340 ug/ml | GeneID (NCBI): 9526 | Recommended Dilutions: WB: 1:1000-1:4000 |
| Source: Rabbit | UNIPROT ID: O75352 | |
| Isotype: IgG | Full Name: mannose-P-dolichol utilization defect 1 | |
| Immunogen Catalog Number: AG14178 | Calculated MW: 247 aa, 27 kDa | |
| | Observed MW: 20 kDa | |

Applications

| | |
|--|---|
| Tested Applications: WB, ELISA | Positive Controls: WB : human placenta tissue, human testis tissue, mouse testis tissue, rat testis tissue |
| Species Specificity: human, mouse, rat | |

Background Information

Storage

Storage:
Store at -20°C. Stable for one year after shipment.
Storage Buffer:
PBS with 0.02% sodium azide and 50% glycerol, pH7.3
Aliquoting is unnecessary for -20°C storage

For technical support and original validation data for this product please contact:

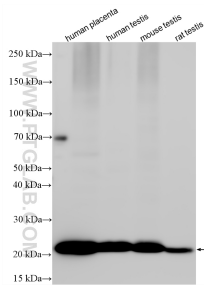
T: 4006900926

E: Proteintech-CN@ptglab.com

W: ptgcn.com

This product is exclusively available under Proteintech Group brand and is not available to purchase from any other manufacturer.

Selected Validation Data



Various lysates were subjected to SDS PAGE followed by western blot with 20321-1-AP (MPDU1 antibody) at dilution of 1:2000 incubated at room temperature for 1.5 hours.