

For Research Use Only

GBE1 Polyclonal antibody

Catalog Number: 20313-1-AP

Featured Product

10 Publications



Basic Information

Catalog Number:

20313-1-AP

Concentration:

550 µg/ml

Source:

Rabbit

Isotype:

IgG

Immunogen Catalog Number:

AG14154

GenBank Accession Number:

BC012098

GeneID (NCBI):

2632

UNIPROT ID:

Q04446

Full Name:

glucan (1,4-alpha-), branching enzyme 1

Calculated MW:

702 aa, 80 kDa

Observed MW:

72 kDa

Purification Method:

Antigen affinity purification

Recommended Dilutions:

WB 1:1000-1:6000

IP 0.5-4.0 µg for 1.0-3.0 mg of total protein lysate

IF/ICC 1:200-1:800

Applications

Tested Applications:

WB, IF/ICC, IP, ELISA

Cited Applications:

WB

Species Specificity:

human, mouse, rat

Cited Species:

human, mouse, rat

Positive Controls:

WB : L02 cells, human skeletal muscle tissue, mouse liver tissue, rat liver tissue

IP : L02 cells,

IF/ICC : HeLa cells,

Background Information

GBE1 (glucan (1,4-alpha-), branching enzyme 1) is essential for the globular and branched structure of glycogen, increasing solubility by creating a hydrophilic surface and reducing intracellular osmotic pressure. It may serve as a potential therapeutic target for treating LUAD(PMID: 31221150). The full sequence can be further processed into a mature form of 75 kDa.

Notable Publications

Author	Pubmed ID	Journal	Application
Dominika Malinska	33049291	Arch Biochem Biophys	WB
Hui Hui Wong	34038740	Am J Hum Genet	WB
Jingzi Zhang	32105074	J Proteome Res	WB

Storage

Storage:

Store at -20°C. Stable for one year after shipment.

Storage Buffer:

PBS with 0.02% sodium azide and 50% glycerol, pH7.3

Aliquoting is unnecessary for -20°C storage

For technical support and original validation data for this product please contact:

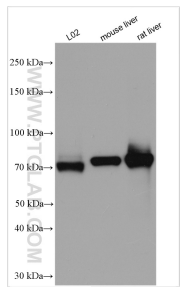
T: 4006900926

E: Proteintech-CN@ptglab.com

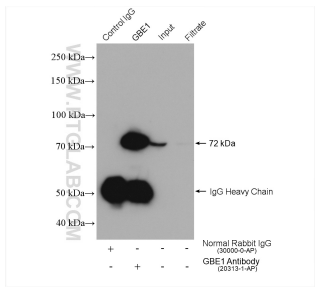
W: ptgcn.com

This product is exclusively available under Proteintech Group brand and is not available to purchase from any other manufacturer.

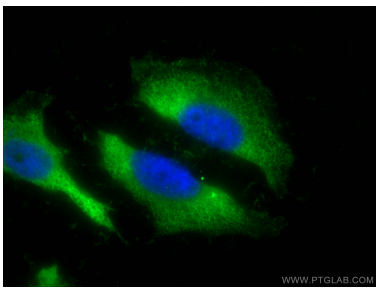
Selected Validation Data



Various lysates were subjected to SDS PAGE followed by western blot with 20313-1-AP (GBE1 antibody) at dilution of 1:3000 incubated at room temperature for 1.5 hours.



IP result of anti-GBE1 (IP:20313-1-AP, 4ug; Detection:20313-1-AP 1:2000) with L02 cells lysate 1360 ug.



Immunofluorescent analysis of (-20°C Ethanol) fixed HeLa cells using GBE1 antibody (20313-1-AP) at dilution of 1:400 and CoraLite®488-Conjugated Goat Anti-Rabbit IgG(H+L).