

# SLC13A4 Polyclonal antibody

Catalog Number: 20302-1-AP

2 Publications

## Basic Information

**Catalog Number:**

20302-1-AP

**Size:**

133 µg/ml

**Source:**

Rabbit

**Isotype:**

IgG

**Immunogen Catalog Number:**

AG14116

**GenBank Accession Number:**

BC030689

**GeneID (NCBI):**

26266

**UNIPROT ID:**

Q9UKG4

**Full Name:**solute carrier family 13  
(sodium/sulfate symporters), member  
4**Calculated MW:**

626 aa, 69 kDa

**Observed MW:**

69 kDa

**Purification Method:**

Antigen affinity purification

**Recommended Dilutions:**

WB 1:500-1:1000

IF/ICC 1:20-1:200

## Applications

**Tested Applications:**

WB, IF/ICC, ELISA

**Cited Applications:**

WB, IHC

**Species Specificity:**

human, mouse, rat

**Cited Species:**

mouse

**Positive Controls:**

WB : HEK-293 cells,

IF/ICC : HEK-293 cells,

## Background Information

SLC13A4 (also known as SUT-1 or NaS2) belongs to the family of Na<sup>+</sup>-coupled anion transporters and mediates sulfate reabsorption in the high endothelial venules (HEV). Sulfate is an obligate nutrient for fetal development. Highly expressed in placenta, SLC13A4 has been proposed to play important physiological roles in maintaining high maternal serum sulfate levels during pregnancy and mediating sulfate supply to the fetus.

## Notable Publications

| Author           | Pubmed ID | Journal      | Application |
|------------------|-----------|--------------|-------------|
| Zhe Zhang        | 30956169  | EBioMedicine | IHC         |
| Dawson Paul A PA | 22674389  | Biol Reprod  | WB, IHC     |

## Storage

**Storage:**

Store at -20°C. Stable for one year after shipment.

**Storage Buffer:**

PBS with 0.02% sodium azide and 50% glycerol pH 7.3.

Aliquoting is unnecessary for -20°C storage

For technical support and original validation data for this product please contact:

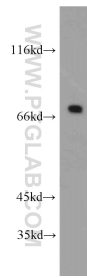
T: 4006900926

E: [Proteintech-CN@ptglab.com](mailto:Proteintech-CN@ptglab.com)W: [ptgcn.com](http://ptgcn.com)

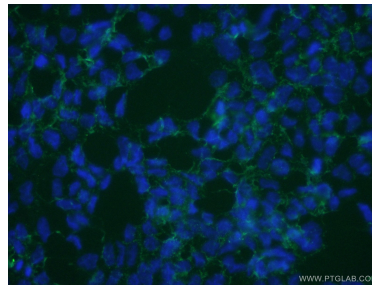
This product is exclusively available under Proteintech Group brand and is not available to purchase from any other manufacturer.



## Selected Validation Data



HEK-293 cells were subjected to SDS PAGE followed by western blot with 20302-1-AP (SLC13A4 antibody) at dilution of 1:500 incubated at room temperature for 1.5 hours.



Immunofluorescent analysis of (10% Formaldehyde) fixed HEK-293 cells using 20302-1-AP (SLC13A4 antibody) at dilution of 1:50 and Alexa Fluor 488-conjugated AffiniPure Goat Anti-Rabbit IgG(H+L).