

For Research Use Only

SLC6A8 Polyclonal antibody

Catalog Number: 20299-1-AP

Featured Product

9 Publications



Basic Information

Catalog Number:

20299-1-AP

Size:

500 µg/ml

Source:

Rabbit

Isotype:

IgG

Immunogen Catalog Number:

AG14110

GenBank Accession Number:

BC012355

GeneID (NCBI):

6535

UNIPROT ID:

P48029

Full Name:

solute carrier family 6
(neurotransmitter transporter,
creatine), member 8

Calculated MW:

635 aa, 71 kDa

Observed MW:

65-70 kDa

Purification Method:

Antigen affinity purification

Recommended Dilutions:

WB 1:300-1:1000

IHC 1:50-1:500

IF 1:50-1:500

Applications

Tested Applications:

IF/ICC, IHC, WB, ELISA

Cited Applications:

WB, IHC

Species Specificity:

human, mouse, rat

Cited Species:

human, mouse

**Note-IHC: suggested antigen retrieval with
TE buffer pH 9.0; (*) Alternatively, antigen
retrieval may be performed with citrate
buffer pH 6.0**

Positive Controls:

WB : mouse heart tissue, HUVEC cells, mouse kidney
tissue, rat heart tissue, rat kidney tissue

IHC : mouse brain tissue,

IF : mouse brain tissue, PC-3 cells

Background Information

SLC6A8, also known as the sodium- and chloride-dependent creatine transporter 1 (CT1), plays a critical role in transporting creatine, a crucial molecule for energy metabolism, into cells. SLC6A8 belongs to the solute carrier family 6 (SLC6), responsible for transporting diverse molecules across cell membranes. SLC6A8 expression is highest in muscle, kidney, and other tissues with high energy demands. Mutations in SLC6A8 cause creatine transporter deficiency, an X-linked mental retardation disorder (PMID: 17465020).

Notable Publications

Author	Pubmed ID	Journal	Application
Yongfei Fan	35692837	Front Genet	IHC
Sho Nishikawa	31914311	J Agric Food Chem	WB
Yongfei Fan	35251966	Front Oncol	IHC

Storage

Storage:

Store at -20°C. Stable for one year after shipment.

Storage Buffer:

PBS with 0.02% sodium azide and 50% glycerol pH 7.3.

Aliquoting is unnecessary for -20°C storage

For technical support and original validation data for this product please contact:

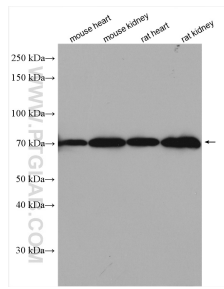
T: 4006900926

E: Proteintech-CN@ptglab.com

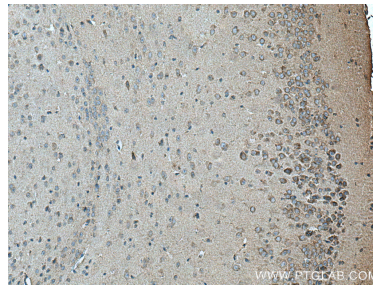
W: ptgcn.com

This product is exclusively available under Proteintech Group brand and is not available to purchase from any other manufacturer.

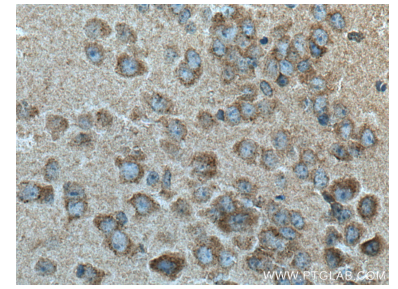
Selected Validation Data



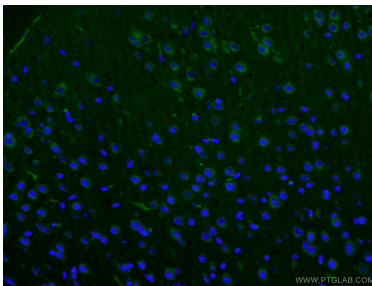
Various lysates were subjected to SDS PAGE followed by western blot with 20299-1-AP (SLC6A8 antibody) at dilution of 1:600 incubated at room temperature for 1.5 hours.



Immunohistochemical analysis of paraffin-embedded mouse brain tissue slide using 20299-1-AP (SLC6A8 antibody) at dilution of 1:200 (under 10x lens). Heat mediated antigen retrieval with Tris-EDTA buffer (pH 9.0).



Immunohistochemical analysis of paraffin-embedded mouse brain tissue slide using 20299-1-AP (SLC6A8 antibody) at dilution of 1:200 (under 40x lens). Heat mediated antigen retrieval with Tris-EDTA buffer (pH 9.0).



Immunofluorescent analysis of (4% PFA) fixed mouse brain tissue using 20299-1-AP (SLC6A8 antibody) at dilution of 1:50 and Coralite488-Conjugated AffiniPure Goat Anti-Rabbit IgG(H+L).