

For Research Use Only

P2RY2 Polyclonal antibody, PBS Only

Catalog Number:20297-1-PBS



Basic Information

Catalog Number:

20297-1-PBS

Source:

Rabbit

Isotype:

IgG

Immunogen Catalog Number:

AG14107

GenBank Accession Number:

BC012104

GeneID (NCBI):

5029

UNIPROT ID:

P41231

Full Name:

purinergic receptor P2Y, G-protein coupled, 2

Calculated MW:

377 aa, 42 kDa

Observed MW:

45 kDa

Purification Method:

Antigen affinity purification

Applications

Tested Applications:

WB, IHC, Indirect ELISA

Species Specificity:

human

Background Information

P2RY2, also named P2RU1, P2U1, and P2Y2, belongs to the G-protein coupled receptor 1 family. It is a receptor for ATP and UTP coupled to G-proteins that activate a phosphatidylinositol-calcium second messenger system. Extracellular ATP then acts on purinergic receptors, including P2RY2, to activate proline-rich tyrosine kinase 2 (Pyk2) kinase and transient plasma membrane depolarization.

Storage

Storage:

Store at -80°C.

The product is shipped with ice packs. Upon receipt, store it immediately at -80°C

Storage Buffer:

PBS only, pH7.3

For technical support and original validation data for this product please contact:

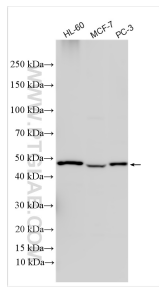
T: 4006900926

E: Proteintech-CN@ptglab.com

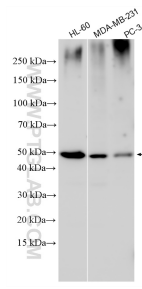
W: ptgcn.com

This product is exclusively available under Proteintech Group brand and is not available to purchase from any other manufacturer.

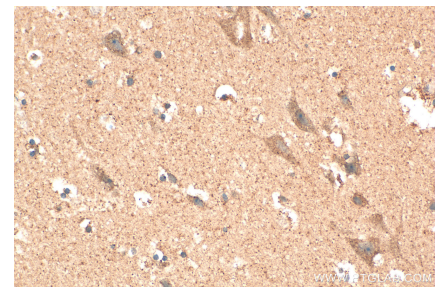
Selected Validation Data



Various lysates were subjected to SDS PAGE followed by western blot with 20297-1-AP (P2RY2 antibody) at dilution of 1:1000 incubated at room temperature for 1.5 hours. This data was developed using the same antibody clone with 20297-1-PBS in a different storage buffer formulation.



Various lysates were subjected to SDS PAGE followed by western blot with 20297-1-AP (P2RY2 antibody) at dilution of 1:1000 incubated at room temperature for 1.5 hours. This data was developed using the same antibody clone with 20297-1-PBS in a different storage buffer formulation.



Immunohistochemical analysis of paraffin-embedded human brain tissue slide using 20297-1-AP (P2RY2 antibody) at dilution of 1:200 (under 40x lens). Heat mediated antigen retrieval with Tris-EDTA buffer (pH 9.0). This data was developed using the same antibody clone with 20297-1-PBS in a different storage buffer formulation.