

For Research Use Only

SERINC3 Polyclonal antibody, PBS Only

Catalog Number:20267-1-PBS



Basic Information

Catalog Number:

20267-1-PBS

Size:

1 mg/ml

Source:

Rabbit

Isotype:

IgG

GenBank Accession Number:

NM_006811

GeneID (NCBI):

10955

UNIPROT ID:

Q13530

Full Name:

serine incorporator 3

Calculated MW:

53 kDa

Observed MW:

53 kDa

Purification Method:

Antigen affinity purification

Applications

Tested Applications:

Species Specificity:

human, mouse, rat

Background Information

SERINC, also named as DIFF33 and TDE1, belongs to the TDE1 family. SERINC3 may be involved in cellular transformation. The antibody is specific to SERINC3.

Storage

Storage:

Store at -80°C.

The product is shipped with ice packs. Upon receipt, store it immediately at -80°C

Storage Buffer:

PBS Only

For technical support and original validation data for this product please contact:

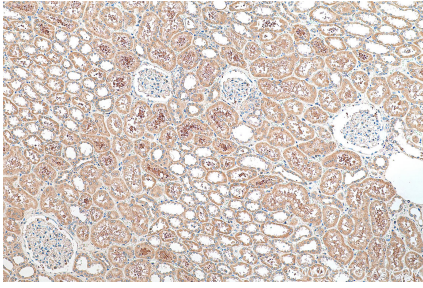
T: 4006900926

E: Proteintech-CN@ptglab.com

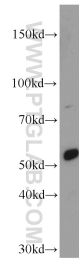
W: ptgcn.com

This product is exclusively available under Proteintech Group brand and is not available to purchase from any other manufacturer.

Selected Validation Data



Immunohistochemical analysis of paraffin-embedded human kidney tissue slide using 20267-1-AP (SERINC3 antibody) at dilution of 1:200 (under 10x lens). Heat mediated antigen retrieval with Tris-EDTA buffer (pH 9.0). This data was developed using the same antibody clone with 20267-1-PBS in a different storage buffer formulation.



mouse pancreas tissue were subjected to SDS PAGE followed by western blot with 20267-1-AP (SERINC3 antibody) at dilution of 1:100 incubated at room temperature for 1.5 hours. This data was developed using the same antibody clone with 20267-1-PBS in a different storage buffer formulation.