

For Research Use Only

# IGF2R-Specific Polyclonal antibody, PBS Only



Catalog Number: 20253-1-PBS

Featured Product

## Basic Information

Catalog Number:

20253-1-PBS

Size:

1 mg/ml

Source:

Rabbit

Isotype:

IgG

GenBank Accession Number:

NM\_000876

GeneID (NCBI):

3482

UNIPROT ID:

P11717

Full Name:

insulin-like growth factor 2 receptor

Calculated MW:

274 kDa

Observed MW:

300 kDa

Purification Method:

Antigen affinity purification

## Applications

Tested Applications:

WB, IHC, IF/ICC, FC (Intra), IP, Indirect ELISA

Species Specificity:

human, mouse

## Background Information

IGF2R, also named as MPRI, CI Man-6-P receptor, CI-MPR, M6PR, IGF-II receptor, M6P/IGF2R, MPR 300 and CD222, belongs to the MRL1/IGF2R family. IGF2R transports of phosphorylated lysosomal enzymes from the Golgi complex and the cell surface to lysosomes. IGF2R is a lysosomal enzymes bearing phosphomannosyl residues bind specifically to mannose-6-phosphate receptors in the Golgi apparatus and the resulting receptor-ligand complex is transported to an acidic prelysosomal compartment where the low pH mediates the dissociation of the complex. This receptor also binds IGF2. IGF2R acts as a positive regulator of T-cell coactivation, by binding DPP4. The antibody is specific to IGF2R.

## Storage

Storage:

Store at -80°C.

The product is shipped with ice packs. Upon receipt, store it immediately at -80°C

Storage Buffer:

PBS Only

For technical support and original validation data for this product please contact:

T: 4006900926

E: [Proteintech-CN@ptglab.com](mailto:Proteintech-CN@ptglab.com)

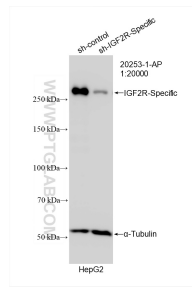
W: [ptgcn.com](http://ptgcn.com)

This product is exclusively available under Proteintech Group brand and is not available to purchase from any other manufacturer.

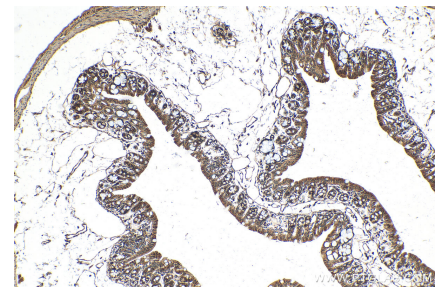
## Selected Validation Data



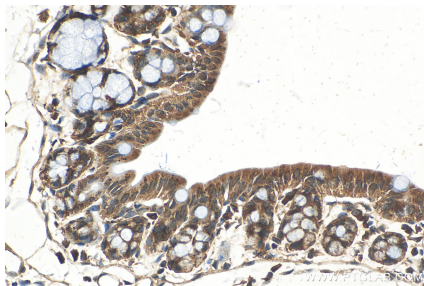
HepG2 cells lysates were subjected to SDS PAGE followed by western blot with 20253-1-AP (IGF2R-Specific antibody) at dilution of 1:30000 incubated at room temperature for 1.5 hours. This data was developed using the same antibody clone with 20253-1-PBS in a different storage buffer formulation.



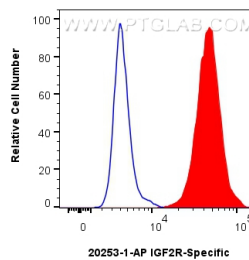
WB result of IGF2R-Specific antibody (20253-1-AP; 1:20000; incubated at room temperature for 1.5 hours) with sh-Control and sh-IGF2R-Specific transfected HepG2 cells. This data was developed using the same antibody clone with 20253-1-PBS in a different storage buffer formulation.



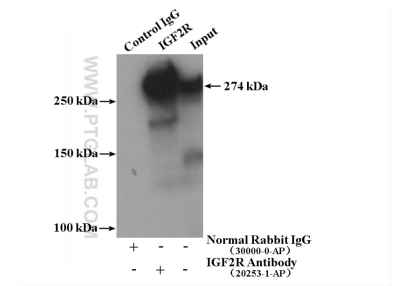
Immunohistochemical analysis of paraffin-embedded mouse colon tissue slide using 20253-1-AP (IGF2R-Specific antibody) at dilution of 1:1000 (under 10x lens). Heat mediated antigen retrieval with Tris-EDTA buffer (pH 9.0). This data was developed using the same antibody clone with 20253-1-PBS in a different storage buffer formulation.



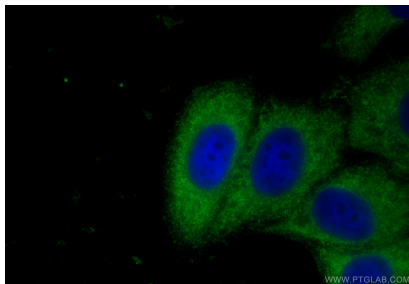
Immunohistochemical analysis of paraffin-embedded mouse colon tissue slide using 20253-1-AP (IGF2R-Specific antibody) at dilution of 1:1000 (under 40x lens). Heat mediated antigen retrieval with Tris-EDTA buffer (pH 9.0). This data was developed using the same antibody clone with 20253-1-PBS in a different storage buffer formulation.



$1 \times 10^6$  HepG2 cells were intracellularly stained with 0.25 ug IGF2R-Specific Polyclonal antibody (20253-1-AP) and CoraLite@488-Conjugated Goat Anti-Rabbit IgG(H+L) (SA00013-2)(red), or 0.25 ug Rabbit IgG control Rabbit PolyAb (30000-0-AP) (blue). Cells were fixed with 4% PFA and permeabilized with Flow Cytometry Perm Buffer (PF00011-C). This data was developed using the same antibody clone with 20253-1-PBS in a different storage buffer formulation.



IP result of anti-IGF2R-Specific (IP:20253-1-AP, 4ug; Detection:20253-1-AP 1:500) with HepG2 cells lysate 3480ug. This data was developed using the same antibody clone with 20253-1-PBS in a different storage buffer formulation.



Immunofluorescent analysis of (-20°C Ethanol) fixed HepG2 cells using IGF2R-Specific antibody (20253-1-AP) at dilution of 1:400 and Multi-rAb CoraLite @ Plus 488-Goat Anti-Rabbit Recombinant Secondary Antibody (H+L) (RGAR002). This data was developed using the same antibody clone with 20253-1-PBS in a different storage buffer formulation.