

For Research Use Only

fibrillin 2-Specific Polyclonal antibody

Catalog Number: 20252-1-AP

3 Publications



Basic Information

Catalog Number:

20252-1-AP

Size:

233 µg/ml

Source:

Rabbit

Isotype:

IgG

GenBank Accession Number:

NM_001999

GeneID (NCBI):

2201

UNIPROT ID:

P35556

Full Name:

fibrillin 2

Calculated MW:

315 kDa

Observed MW:

290 kDa, 160 kDa

Purification Method:

Antigen affinity purification

Recommended Dilutions:

WB 1:500-1:2000

IHC 1:50-1:500

Applications

Tested Applications:

WB, IHC, ELISA

Cited Applications:

WB, IHC

Species Specificity:

human, mouse, rat

Cited Species:

human, mouse

Note-IHC: suggested antigen retrieval with TE buffer pH 9.0; (*) Alternatively, antigen retrieval may be performed with citrate buffer pH 6.0

Positive Controls:

WB : human brain tissue, HepG2 cells, L02 cells, mouse lung tissue

IHC : human placenta tissue,

Background Information

FBN2 belongs to the fibrillin family. Fibrillins are structural components of 10-12 nm extracellular calcium-binding microfibrils which occur either in association with elastin or in elastin-free bundles. Fibrillin-2-containing microfibrils regulate the early process of elastic fiber assembly. Defects in FBN2 are the cause of congenital contractural arachnodactyly (CCA) which also known as Beals syndrome or distal arthrogryposis type 9 (DA9). This antibody is specific to FBN2. It recognizes both two isoforms ~300 kDa and 160 kDa.

Notable Publications

Author	Pubmed ID	Journal	Application
Sreenivasulu Chintala	34693597	Head Neck	WB
Pan Long	39490708	J Ethnopharmacol	WB,IHC
Yin Shuyuan	37620943	J Ovarian Res	IHC

Storage

Storage:

Store at -20°C. Stable for one year after shipment.

Storage Buffer:

PBS with 0.02% sodium azide and 50% glycerol pH 7.3.

Aliquoting is unnecessary for -20°C storage

For technical support and original validation data for this product please contact:

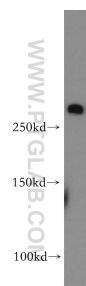
T: 4006900926

E: Proteintech-CN@ptglab.com

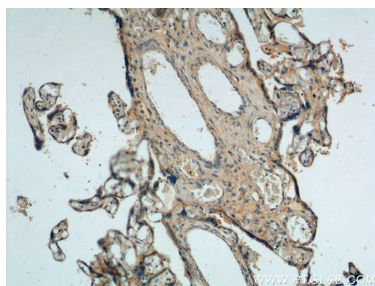
W: ptgcn.com

This product is exclusively available under Proteintech Group brand and is not available to purchase from any other manufacturer.

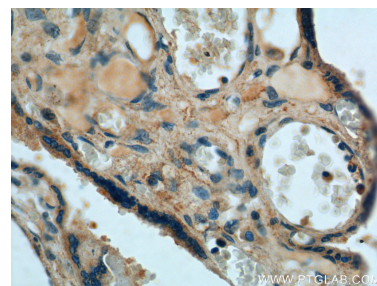
Selected Validation Data



human brain tissue were subjected to SDS PAGE followed by western blot with 20252-1-AP (fibrillin 2-Specific antibody) at dilution of 1:500 incubated at room temperature for 1.5 hours.



Immunohistochemical analysis of paraffin-embedded human placenta tissue slide using 20252-1-AP (fibrillin 2-Specific antibody) at dilution of 1:100 (under 10x lens).



Immunohistochemical analysis of paraffin-embedded human placenta tissue slide using 20252-1-AP (fibrillin 2-Specific antibody) at dilution of 1:100 (under 40x lens).