

For Research Use Only

# YES1-Specific Polyclonal antibody

Catalog Number: 20243-1-AP

Featured Product

6 Publications



## Basic Information

### Catalog Number:

20243-1-AP

### Size:

1000 µg/ml

### Source:

Rabbit

### Isotype:

IgG

### GenBank Accession Number:

NM\_005433

### GeneID (NCBI):

7525

### UNIPROT ID:

P07947

### Full Name:

v-yes-1 Yamaguchi sarcoma viral oncogene homolog 1

### Calculated MW:

61 kDa

### Observed MW:

61 kDa

### Purification Method:

Antigen affinity purification

### Recommended Dilutions:

WB 1:500-1:1000

IP 0.5-4.0 µg for 1.0-3.0 mg of total protein lysate

IHC 1:50-1:500

## Applications

### Tested Applications:

IHC, IP, WB, ELISA

### Cited Applications:

IHC

### Species Specificity:

human

### Cited Species:

human, mouse

### Positive Controls:

WB: A431 cells, HepG2 cells, A549 cells, DU 145 cells, HEK-293 cells

IP: A549 cells,

IHC: human lung cancer tissue, human colon cancer tissue

**Note-IHC: suggested antigen retrieval with TE buffer pH 9.0; (\*) Alternatively, antigen retrieval may be performed with citrate buffer pH 6.0**

## Background Information

YES1, also named as p61-Yes and YES, belongs to the protein kinase superfamily, Tyr protein kinase family and SRC subfamily. It promotes infectivity of *Neisseria gonorrhoeae* in epithelial cells by phosphorylating MCP/CD46. YES1 catalyzes the reaction: ATP + a [protein]-L-tyrosine = ADP + a [protein]-L-tyrosine phosphate. The antibody is specific to YES1.

## Notable Publications

Author	Pubmed ID	Journal	Application
Jackson A Roberts	34757788	Sci Adv	
Esther Redin	33658304	J Immunother Cancer	IHC
Irati Garmendia	31166114	Am J Respir Crit Care Med	IHC

## Storage

### Storage:

Store at -20°C. Stable for one year after shipment.

### Storage Buffer:

PBS with 0.02% sodium azide and 50% glycerol pH 7.3.

Aliquoting is unnecessary for -20°C storage

For technical support and original validation data for this product please contact:

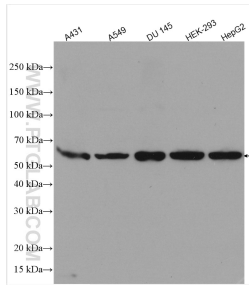
T: 4006900926

E: Proteintech-CN@ptglab.com

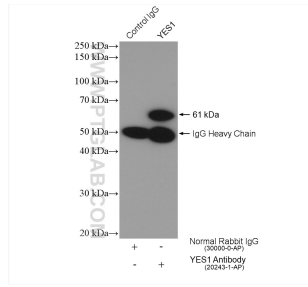
W: ptgcn.com

**This product is exclusively available under Proteintech Group brand and is not available to purchase from any other manufacturer.**

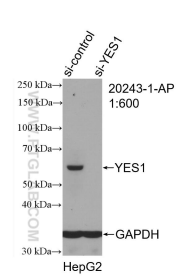
## Selected Validation Data



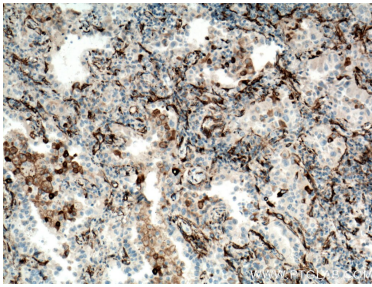
Various lysates were subjected to SDS PAGE followed by western blot with 20243-1-AP (YES1-Specific antibody) at dilution of 1:600 incubated at room temperature for 1.5 hours.



IP result of anti-YES1-Specific (IP:20243-1-AP, 4ug; Detection:20243-1-AP 1:500) with A549 cells lysate 1400 ug.



WB result of YES1-Specific antibody (20243-1-AP; 1:600; incubated at room temperature for 1.5 hours) with sh-Control and sh-YES1-Specific transfected HepG2 cells.



Immunohistochemical analysis of paraffin-embedded human lung cancer tissue slide using 20243-1-AP (YES1-Specific antibody) at dilution of 1:100 (under 10x lens. Heat mediated antigen retrieval with Tris-EDTA buffer (pH 9.0).