

For Research Use Only

ITGA6X1A Polyclonal antibody

Catalog Number: 20231-1-AP



Basic Information

Catalog Number:

20231-1-AP

Size:

173 µg/ml

Source:

Rabbit

Isotype:

IgG

GenBank Accession Number:

NM_000210

GeneID (NCBI):

3655

UNIPROT ID:

P23229

Full Name:

integrin, alpha 6

Calculated MW:

127 kDa

Observed MW:

100 kDa, 150 kDa

Purification Method:

Antigen affinity purification

Recommended Dilutions:

WB 1:200-1:1000

Applications

Tested Applications:

WB, ELISA

Species Specificity:

human, mouse

Positive Controls:

WB : mouse spleen tissue, mouse colon tissue

Background Information

ITGA6, also named as CD49f and VLA-6, belongs to the integrin alpha chain family. It is a receptor for laminin on platelets. ITGA6 is a receptor for laminin in epithelial cells and it plays a critical structural role in the hemidesmosome. Defects in ITGA6 are a cause of epidermolysis bullosa letalis with pyloric atresia (EB-PA) which also known as junctional epidermolysis bullosa with pyloric atresia (PA-JEB) or aplasia cutis congenita with gastrointestinal atresia. The antibody is specific to isoform Alpha-6X1A, isoform Alpha-6X2A, isoform Alpha-6X1X2A isoform7 and isoform9 of ITGA6.

Storage

Storage:

Store at -20°C. Stable for one year after shipment.

Storage Buffer:

PBS with 0.02% sodium azide and 50% glycerol pH 7.3.

Aliquoting is unnecessary for -20°C storage

For technical support and original validation data for this product please contact:

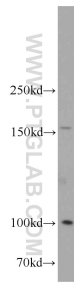
T: 4006900926

E: Proteintech-CN@ptglab.com

W: ptgcn.com

This product is exclusively available under Proteintech Group brand and is not available to purchase from any other manufacturer.

Selected Validation Data



mouse spleen tissue were subjected to SDS PAGE followed by western blot with 20231-1-AP (ITGA6-Specific antibody) at dilution of 1:300 incubated at room temperature for 1.5 hours.