

For Research Use Only

ROBO3-Specific Polyclonal antibody

Catalog Number: 20220-1-AP

2 Publications



Basic Information

Catalog Number:

20220-1-AP

Size:

500 ug/ml

Source:

Rabbit

Isotype:

IgG

GenBank Accession Number:

NM_022370

GeneID (NCBI):

64221

UNIPROT ID:

Q96MS0

Full Name:

roundabout, axon guidance receptor,
homolog 3 (Drosophila)

Calculated MW:

148 kDa

Observed MW:

148 kDa

Purification Method:

Antigen affinity purification

Recommended Dilutions:

WB 1:500-1:1000

IHC 1:20-1:200

Applications

Tested Applications:

WB, IHC, ELISA

Cited Applications:

WB, IF

Species Specificity:

human, mouse, rat

Cited Species:

human, mouse

Positive Controls:

WB : mouse brain tissue, rat brain tissue

IHC : human gliomas tissue, human brain tissue

**Note-IHC: suggested antigen retrieval with
TE buffer pH 9.0; (*) Alternatively, antigen
retrieval may be performed with citrate
buffer pH 6.0**

Background Information

ROBO3 belongs to the immunoglobulin superfamily and ROBO family. ROBO3 is thought to be involved during neural development in axonal navigation at the ventral midline of the neural tube. In spinal cord development, it plays a role in guiding commissural axons probably by preventing premature sensitivity to Slit proteins thus inhibiting Slit signaling through ROBO1. It is required for hindbrain axon midline crossing. Defects in ROBO3 are a cause of familial horizontal gaze palsy with progressive scoliosis (HGPPS). Patients show a medulla where motor and sensory projections appear uncrossed. The antibody is specific to ROBO3.

Notable Publications

Author	Pubmed ID	Journal	Application
Oliva Palander	33872598	J Biol Chem	IF
Ziyue Xu	39675489	Brain Res Bull	WB

Storage

Storage:

Store at -20°C. Stable for one year after shipment.

Storage Buffer:

PBS with 0.02% sodium azide and 50% glycerol pH 7.3.

Aliquoting is unnecessary for -20°C storage

For technical support and original validation data for this product please contact:

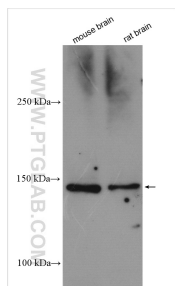
T: 4006900926

E: Proteintech-CN@ptglab.com

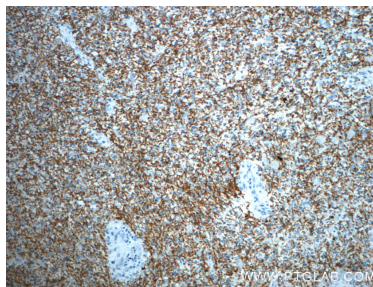
W: ptgcn.com

This product is exclusively available under Proteintech Group brand and is not available to purchase from any other manufacturer.

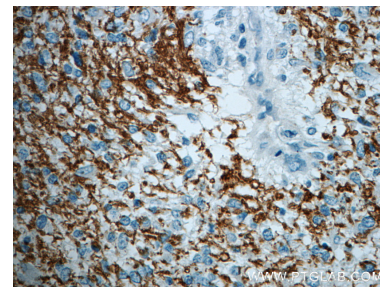
Selected Validation Data



Various lysates were subjected to SDS PAGE followed by western blot with 20220-1-AP (ROBO3-Specific antibody) at dilution of 1:500 incubated at room temperature for 1.5 hours.



Immunohistochemical analysis of paraffin-embedded human gliomas slide using 20220-1-AP (ROBO3-Specific Antibody) at dilution of 1:50.



Immunohistochemical analysis of paraffin-embedded human gliomas slide using 20220-1-AP (ROBO3-Specific Antibody) at dilution of 1:50.