

For Research Use Only

IGF1B-Specific Polyclonal antibody

Catalog Number: 20215-1-AP

Featured Product

15 Publications



Basic Information

Catalog Number:

20215-1-AP

Concentration:

440 µg/ml

Source:

Rabbit

Isotype:

IgG

GenBank Accession Number:

NM_001111285

GeneID (NCBI):

3479

UNIPROT ID:

P05019

Full Name:

insulin-like growth factor 1
(somatomedin C)

Calculated MW:

22 kDa

Purification Method:

Antigen affinity purification

Recommended Dilutions:

IHC 1:50-1:500

IF-P 1:50-1:500

Applications

Tested Applications:

IHC, IF-P, ELISA

Cited Applications:

IHC, IF, Dot blot

Species Specificity:

human, mouse

Cited Species:

human, mouse, rat, chicken

Positive Controls:

IHC : human liver cancer tissue, human lung cancer tissue, mouse liver tissue

IF-P : mouse liver tissue,

Note-IHC: suggested antigen retrieval with TE buffer pH 9.0; (*) Alternatively, antigen retrieval may be performed with citrate buffer pH 6.0

Background Information

IGF1B, also named as IBP1, MGF, IGF-I and Somatomedin-C, belongs to the INS family. IGF1 is structurally and functionally related to INS but have a much higher growth-promoting activity. Altered expression or mutation of IGF-1 is associated with several human disorders, including type I diabetes and various forms of cancer. Defects in IGF1 are the cause of INS-like growth factor I deficiency (IGF1 deficiency) which is an autosomal recessive disorder characterized by growth retardation, sensorineural deafness and mental retardation. The antibody is specific to isoform IGF-1B.

Notable Publications

Author	Pubmed ID	Journal	Application
Stanley B DeVore	29987187	Mol Cell Biol	
Ni Zeng	31520740	Toxicol In Vitro	
Xiaodong Pei	30452899	Chem Biol Interact	

Storage

Storage:

Store at -20°C. Stable for one year after shipment.

Storage Buffer:

PBS with 0.02% sodium azide and 50% glycerol pH 7.3.

Aliquoting is unnecessary for -20°C storage

For technical support and original validation data for this product please contact:

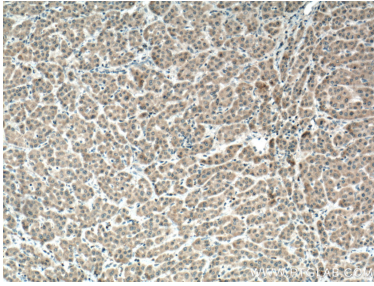
T: 4006900926

E: Proteintech-CN@ptglab.com

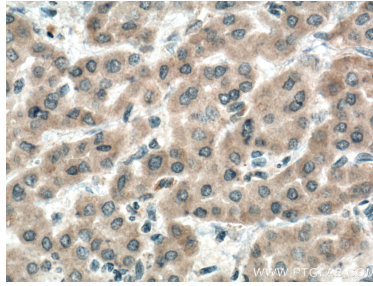
W: ptgcn.com

This product is exclusively available under Proteintech Group brand and is not available to purchase from any other manufacturer.

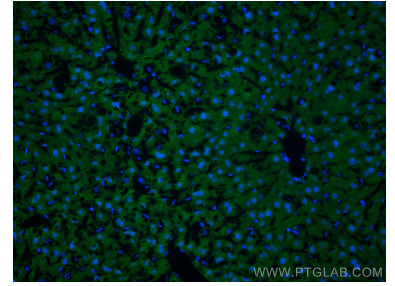
Selected Validation Data



Immunohistochemical analysis of paraffin-embedded human liver cancer tissue slide using 20215-1-AP (IGF1B-Specific antibody) at dilution of 1:200 (under 10x lens. Heat mediated antigen retrieval with Tris-EDTA buffer (pH 9.0).



Immunohistochemical analysis of paraffin-embedded human liver cancer tissue slide using 20215-1-AP (IGF1B-Specific antibody) at dilution of 1:200 (under 40x lens. Heat mediated antigen retrieval with Tris-EDTA buffer (pH 9.0).



Immunofluorescent analysis of (4% PFA) fixed mouse liver tissue using IGF1B-Specific antibody (20215-1-AP) at dilution of 1:200 and CoraLite®488-Conjugated Goat Anti-Rabbit IgG(H+L).