

For Research Use Only

GPR150-Specific Polyclonal antibody

Catalog Number: 20213-1-AP



Basic Information

Catalog Number:

20213-1-AP

Size:

1100 ug/ml

Source:

Rabbit

Isotype:

IgG

GenBank Accession Number:

NM_199243

GeneID (NCBI):

285601

UNIPROT ID:

Q8NGU9

Full Name:

G protein-coupled receptor 150

Calculated MW:

46 kDa

Purification Method:

Antigen affinity purification

Recommended Dilutions:

IHC 1:50-1:500

IF/ICC 1:200-1:800

Applications

Tested Applications:

IHC, IF/ICC, ELISA

Species Specificity:

human

Positive Controls:

IHC : mouse brain tissue,

IF/ICC : SH-SY5Y cells,

Note-IHC: suggested antigen retrieval with TE buffer pH 9.0; (*) Alternatively, antigen retrieval may be performed with citrate buffer pH 6.0

Background Information

GPR150 belongs to the G-protein coupled receptor 1 family. It is an orphan receptor. This antibody is specific to GPR150.

Storage

Storage:

Store at -20°C. Stable for one year after shipment.

Storage Buffer:

PBS with 0.02% sodium azide and 50% glycerol pH 7.3.

Aliquoting is unnecessary for -20°C storage

For technical support and original validation data for this product please contact:

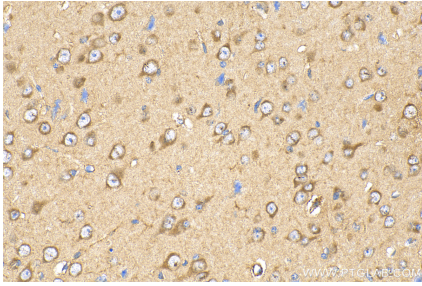
T: 4006900926

E: Proteintech-CN@ptglab.com

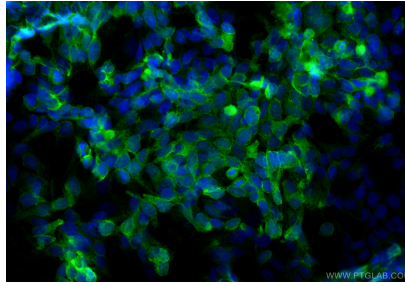
W: ptgcn.com

This product is exclusively available under Proteintech Group brand and is not available to purchase from any other manufacturer.

Selected Validation Data



Immunohistochemical analysis of paraffin-embedded mouse brain tissue slide using 20213-1-AP (GPR150-Specific antibody) at dilution of 1:200 (under 40x lens). Heat mediated antigen retrieval with Tris-EDTA buffer (pH 9.0).



Immunofluorescent analysis of (4% PFA) fixed SH-SY5Y cells using GPR150-Specific antibody (20213-1-AP) at dilution of 1:400 and Multi-rAb CoraLite® Plus 488-Goat Anti-Rabbit Recombinant Secondary Antibody (H+L) (RGAR002).